



Towerview, Kings Newnham Road Church Lawford, Rugby, Warwickshire, CV23 9EP

Guide Price £495,000

Exceptional, detached bungalow, surrounded by private gardens, and boasting four double bedrooms, situated in the popular village of Church Lawford.

Driveway for several vehicles, lounge, refitted kitchen/diner/family room, refitted bathroom and en-suite, beautifully presented throughout. DBLG/GCH.



Property Features

- Detached Bungalow
- Four Double Bedrooms
- Large Private Gardens
- Driveway For Several Vehicles
- Refitted Kitchen/Family Room
- Lounge
- Refitted Bathroom & En-Suite
- Potential To Extend
- Double Glazing
- Gas Central Heating

Full Description

Exceptional detached bungalow located on a generous, private plot surrounded by gardens, and offering potential for further extension (subject to necessary planning permissions).

Situated in the popular village of Church Lawford, with the well regarded 'Old Smithy' pub and restaurant, and offering easy access to nearby Rugby town centre, and train station, as well as the regions central motorway network.

The plot is opposite open fields, and benefits from a substantial driveway providing off road parking for several vehicles.

Large mature gardens surround the property providing a good level of privacy, and opportunity for further development.

The accommodation comprises in brief of entrance porch and hallway, lounge with French doors leading onto patio area, a spacious refitted kitchen/diner/family room, refitted family bathroom, four double bedrooms, and en-suite facilities to the master bedroom.

The property is beautifully presented throughout, offers spacious and versatile living accommodation, and further benefits from double glazing and gas central heating to radiators.

This is a rare opportunity to acquire a unique property in a beautiful setting, and early inspection is highly recommended to avoid disappointment.

Dimensions:

Entrance Porch

Entrance Hallway

Lounge L:17'9" x W: 18'6"

Kitchen/Dining Room L: 9" x W: 31'11"

Utility Room

Bathroom

Bedroom 1) L: 12'7" x W:13'11"

En-Suite

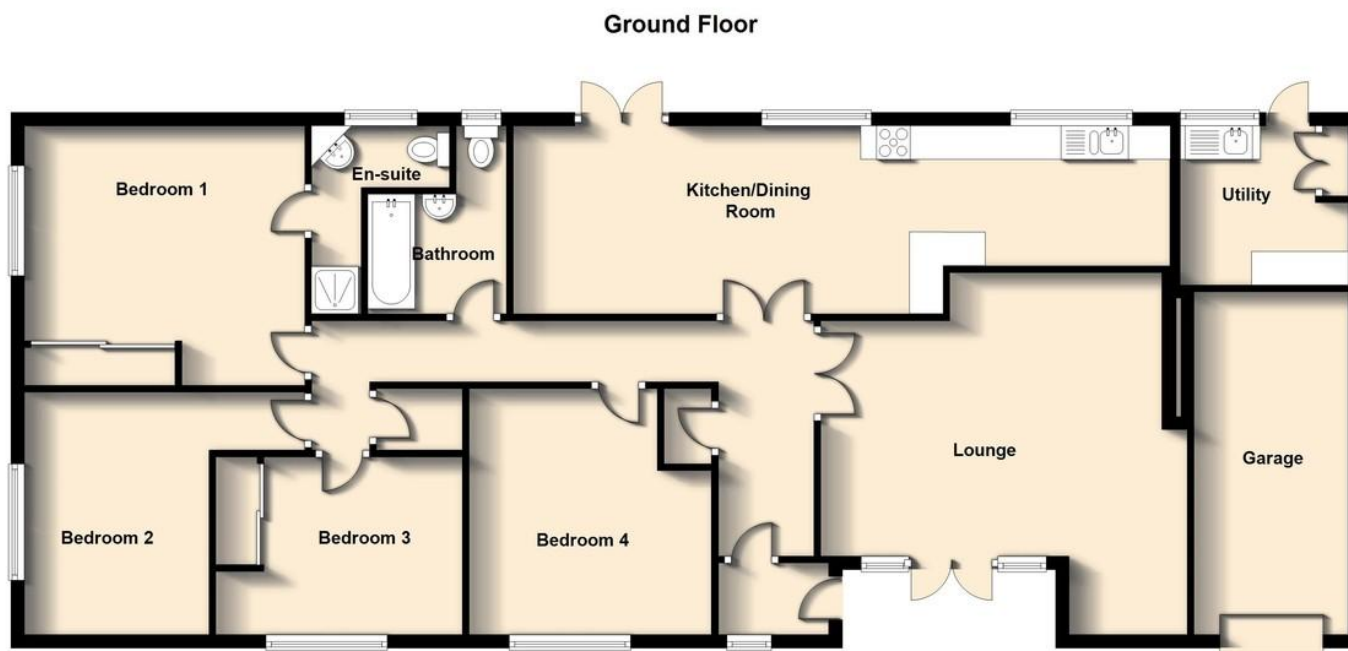
Bedroom 2) L: 12" x W: 13'11"

Bedroom 3) L: 8'7" x W: 12"

Bedroom 4) L: 12" x W: 11'10"







Dimension approximate for display purposes only
Plan produced using PlanUp.

Kings Newnham Road, Chruch Lawford



6 The Green
Dunchurch
Rugby
Warwickshire
CV22 6NX

www.carterandking.co.uk
info@carterandking.co.uk
01788 550066

Agents Note: Whilst every care has been taken to prepare these sales particulars, they are for guidance purposes only. All measurements are approximate and for general guidance purposes only and whilst every care has been taken to ensure their accuracy, they should not be relied upon and potential buyers are advised to recheck the measurements.