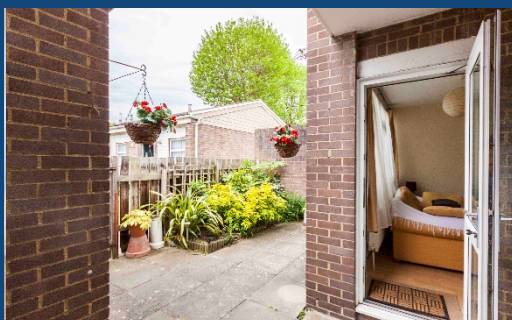
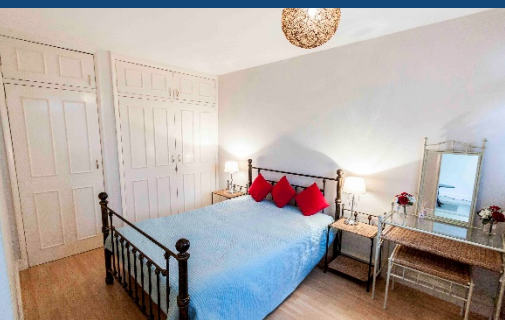
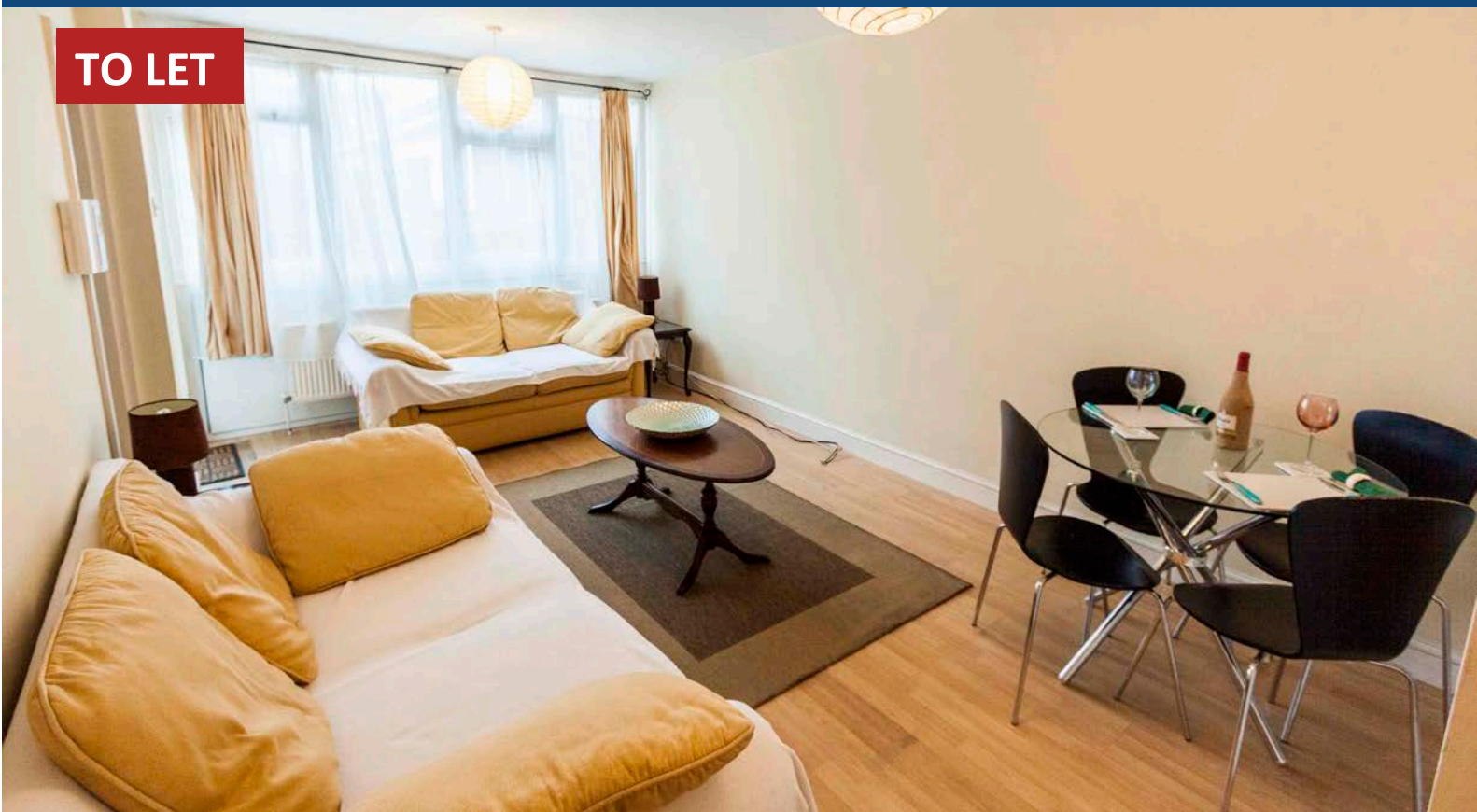


**TO LET**



## Key Features

- ✓ Fully furnished, 1 bed, ground floor flat
- ✓ South facing private garden and off street parking
- ✓ Security system included
- ✓ Ample storage space
- ✓ Gas central heating and double glazing

## Property Details

**Bedrooms:** 1

**Bathrooms:** 1

**Furnishings:** Furnished

**Pets Allowed:** No

**Council Tax Band:** B

**EPC Rating:** C

**Available:** Now

**Description:** Oliver Field Associates are pleased to present this spacious and fully furnished, ground floor 1 bedroom flat Kidbrooke Park Close. With proximity to both Kidbrooke and Blackheath Mainline stations the flat also features a south facing private garden, security system and off street parking.