



riverhomes

Chapelier House, Wandsworth, SW18

[riverhomes.co.uk](http://riverhomes.co.uk)



# Chapelier House, SW18

**Features:** Sensational apartment | Fantastic River views | Two bedrooms | River fronted terrace | Large open plan living area | Underground parking

riverhomes are delighted to bring to the market this exclusive two bedroom two bathroom apartment located in the very exclusive and sought after 'Riverside Quarter'. The apartment is positioned at the front of the development therefore boasting the best views of the River Thames. Comprises: large open plan kitchen and reception room with corner aspect patio doors leading onto a River fronted terrace, master bedroom with en-suite bathroom, 2nd bedroom, and further bathroom. The apartment benefits from 24 hour concierge service as well as the use of a well-equipped gym and a swimming pool overlooking the river. The apartment comes with one underground parking space.

## Key information:

**Local Authority:** London Borough of Wandsworth

**Internal Area:** 937 sq. ft. / 87.05 sq. m.

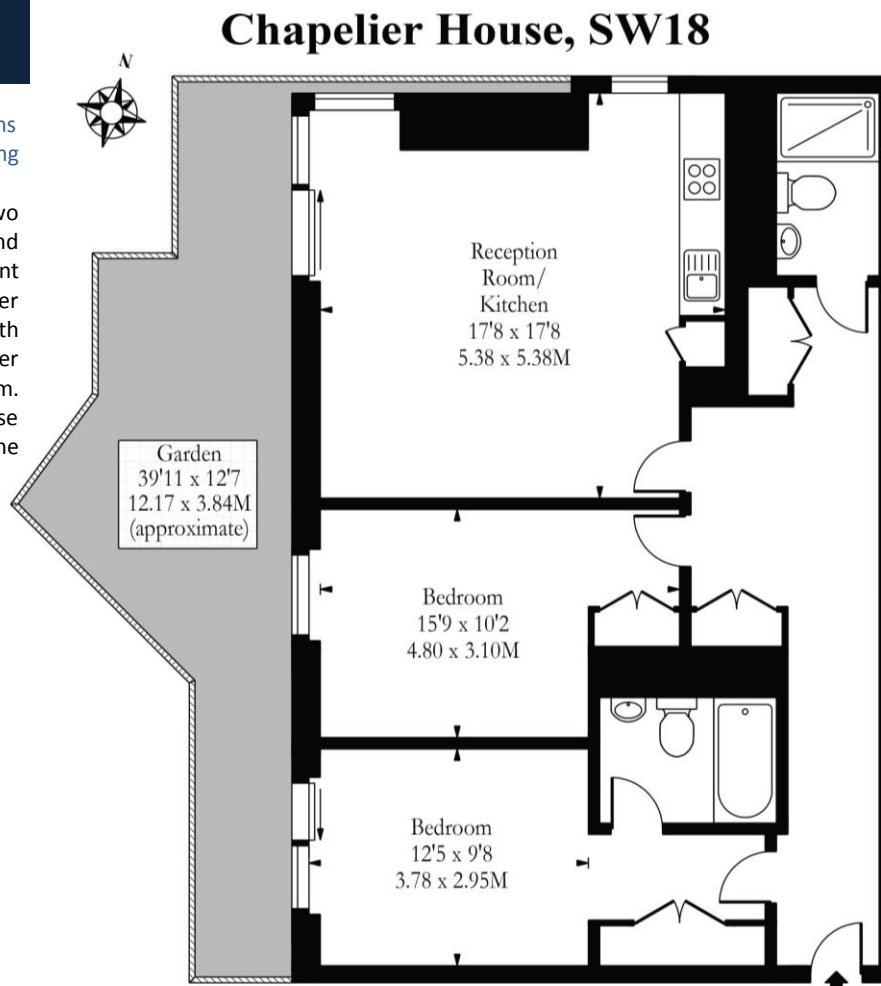
**Furnishings:** Furnished

**Available from:** Beginning of September 2017

**Rental price: £611 per week**

## Energy Efficiency Rating

	Current	Potential
Very energy efficient - lower running costs		
(92 plus) A		
(81-91) B		
(69-80) C		
(55-68) D	63	67
(39-54) E		
(21-38) F		
(1-20) G		
Not energy efficient - higher running costs		



**Ground Floor**  
**Approx Gross Internal Area 937 Sq Ft - 87.05 Sq M**

*Illustration Purposes Only*  
Whilst every attempt has been made to ensure the accuracy of the floor plan contained here, measurements of doors, windows, rooms and any other items are approximate and no responsibility is taken for any errors, omissions or mis-statements. The plan is for illustrative purposes only, is not to scale and should be used as such by any prospective purchaser.



**For clarification:** These particulars are believed to be correct but their accuracy is not guaranteed and do not form part of any contract. Any photographs are intended as a guide only and it should not be assumed that any of the fixtures / fittings are included in any sale. Appliances, including central heating, have not been tested. All lease, service charge and ground rent details, if shown, have been provided by the vendor and have not been verified. If you require clarification of any points please contact us

**1-3 Lower Richmond Road, London, SW15 1EJ**

**Phone:** 020 8788 6000 **Fax:** 020 8780 3000 **Email:** southwest@riverhomes.co.uk

[riverhomes.co.uk](http://riverhomes.co.uk)