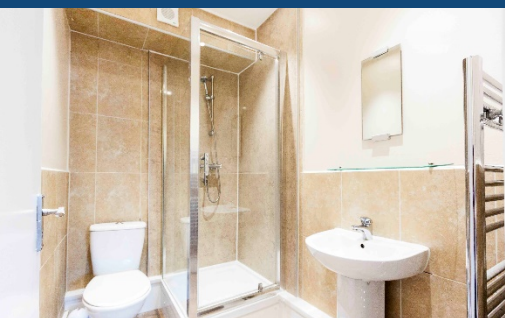
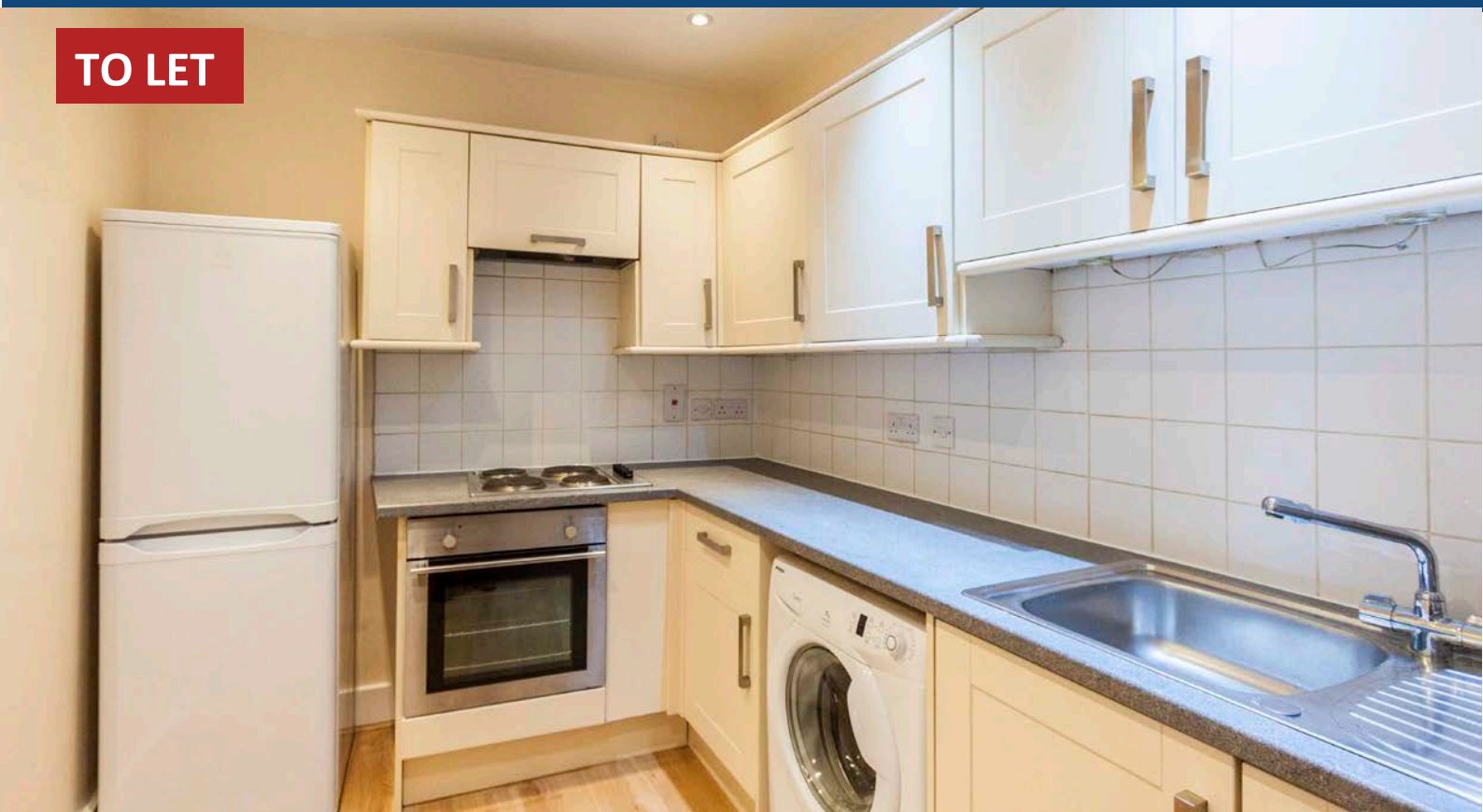


**TO LET**



## Key Features

- ✓ Larger than average 1 bedroom flat (807 sq. feet) with working gas fireplace
- ✓ Within walking distance from Greenwich and Deptford Bridge Mainline and DLR stations
- ✓ Modern fully fitted kitchen

## Property Details

**Bedrooms:** 1

**Bathrooms:** 1

**Furnishings:** Unfurnished

**Pets Allowed:** No

**Council Tax Band:** B

**EPC Rating:** D

**Available:** Now

**Description:** The accommodation comprises a very large lounge with gas fire, large double bedroom, large study/storage room, modern fully fitted kitchen and shower room w/c. Benefits of the flat include: Gas central heating, entry phone and neutral décor.