



Major

Son & Phipps

Sheen Gate Gardens, East Sheen, SW14
£2,000 per month, For long let



Fabulous, two double bedroom first floor (lift serviced) flat with garage.
New, high quality refurbishment throughout with newly fitted kitchen, bathroom and carpets.

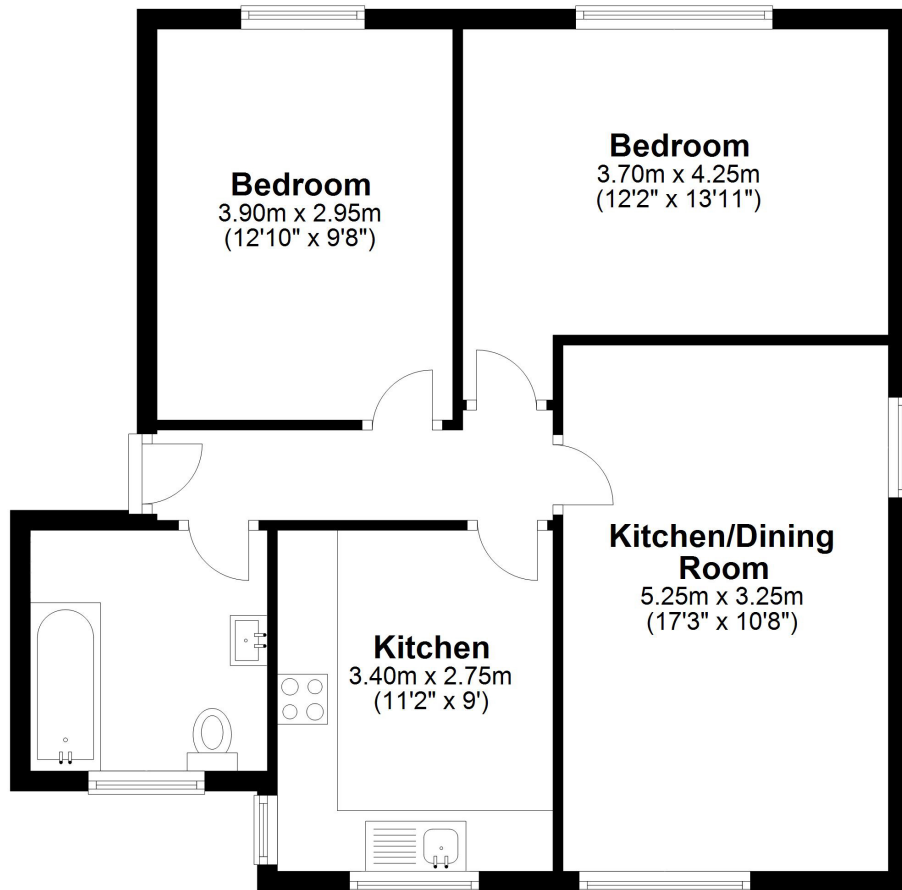
Prime Park side location, a short walk from the shops and station.
Available now.



Energy Efficiency Rating		
	Current	Potential
Very energy efficient - lower running costs		
(92-100) A		
(81-91) B		
(69-80) C	79	80
(55-68) D		
(39-54) E		
(21-38) F		
(1-20) G		
Not energy efficient - higher running costs		
England, Scotland & Wales		EU Directive 2002/91/EC

First Floor

Approx. 63.1 sq. metres (679.3 sq. feet)



Total area: approx. 63.1 sq. metres (679.3 sq. feet)

Major Son & Phipps give notice to anyone reading these particulars that: (i) these particulars do not constitute part of an offer or contract; (ii) these particulars and any pictures or plans represent the opinion of the author and are given in good faith for guidance only and must not be construed as statements of fact; (iii) nothing in the particulars shall be deemed a statement that the property is in good condition otherwise; we have not carried out a structural survey of the property and have not tested the services, appliances or specified fittings.

Long Description

Fabulous, two double bedroom first floor (lift serviced) flat with garage.
New, high quality refurbishment throughout with newly fitted kitchen, bathroom and carpets.

Prime Park side location, a short walk from the shops and station.
Available now.