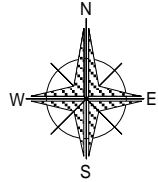


Hill Cross Barn, Tedstone Delamere, Bromyard, HR7 4PR

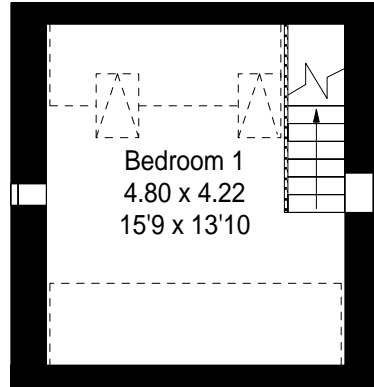
Approximate Gross External Area :- 117 sq m / 1259 sq ft

Approximate Gross Internal Area :- 93 sq m / 1001 sq ft

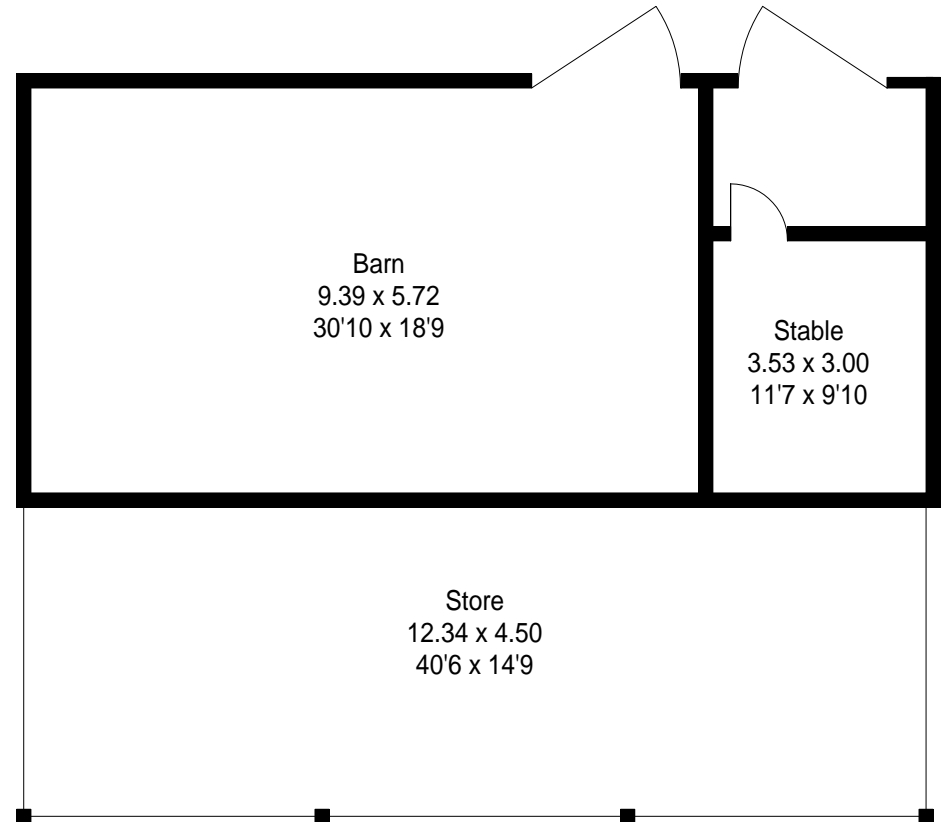
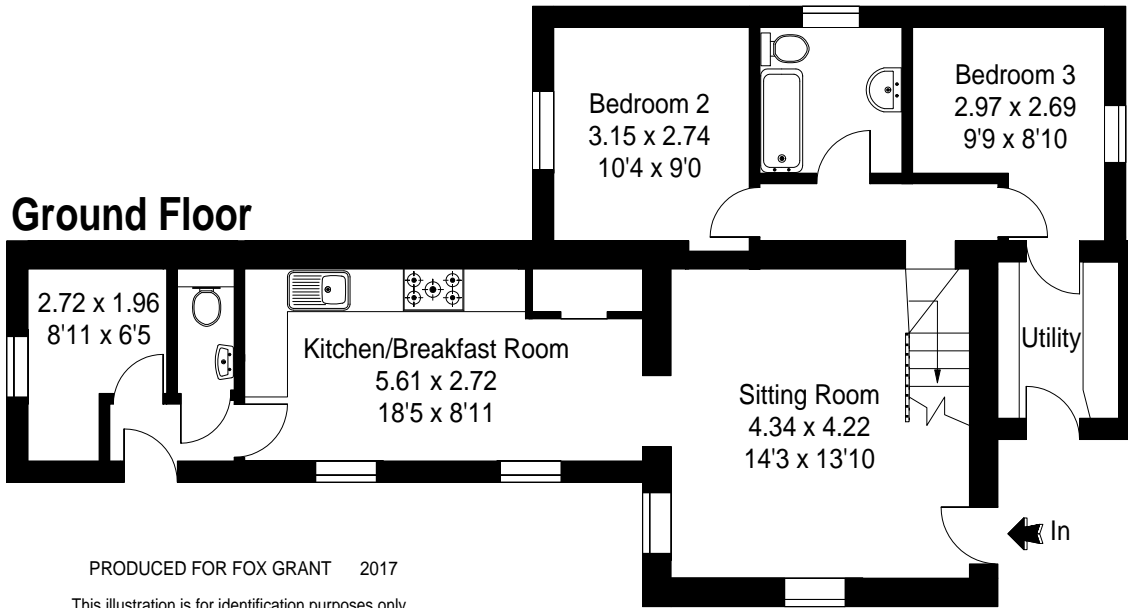
[---] = Reduced headroom below 1.5 m / 5'0"



First Floor



Ground Floor



PRODUCED FOR FOX GRANT 2017

This illustration is for identification purposes only.
Not drawn to scale, unless stated.