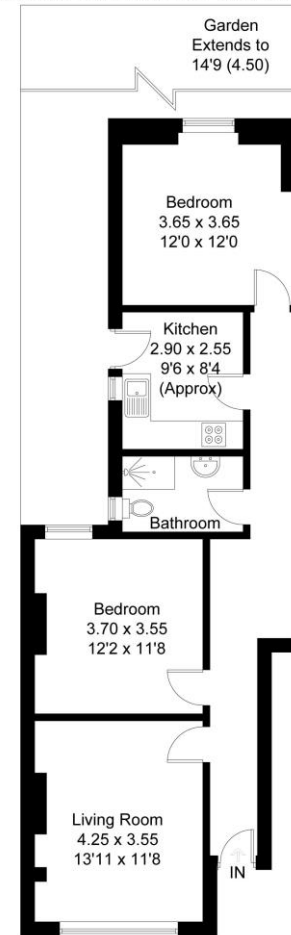






Approximate Gross Internal Area = 69.8 sq m / 751 sq ft



A superb two double bedroom maisonette on a quiet residential road a stone's throw from Kings College Hospital. This property is laid out over the ground floor of a Victorian building and is conveniently located for nearby underground and overground stations. The property has a lovely homely feel; there is plenty of space and light throughout as well as some beautiful period features. Both bedrooms are large doubles and have good storage space. The bathroom is finished to a good standard with a large walk-in shower and WC. The living room is perfect for entertaining guests and the kitchen is a good size that would suit any keen chefs. The property also benefits from a beautiful private garden with lots of space and sunlight. Offered to the market chain free, this freehold property is ideally suited to first-time buyers, or buy-to-let investors.

[beresfordresidential.com](http://beresfordresidential.com)

020 7358 7979



B1162