

FLETCHERS

ESTATE AGENTS



Perryn Road, W3

£1,295,000

A three/four bedroom detached home with a large well stocked front and back garden and off street gated parking for two vehicles.

Perryn Road is one of the most prestigious streets in Acton with Acton Central and Acton Main Line (the forthcoming Crossrail station) approximately half a mile. East Acton (Central line) is under a mile. West Acton (Central line), Ealing Common and Acton Town (Piccadilly and District line) are also nearby.



The house is luxuriously spacious and light inside with a reception hall, very large and open reception room with dining area, a further reception room, a substantial conservatory, study, utility room, high ceilings and fireplace.

All the bedrooms are of a larger than average size with master en suite bathroom and family bathroom. A very large well stocked front and back garden with numerous fruit trees, decking and outbuilding

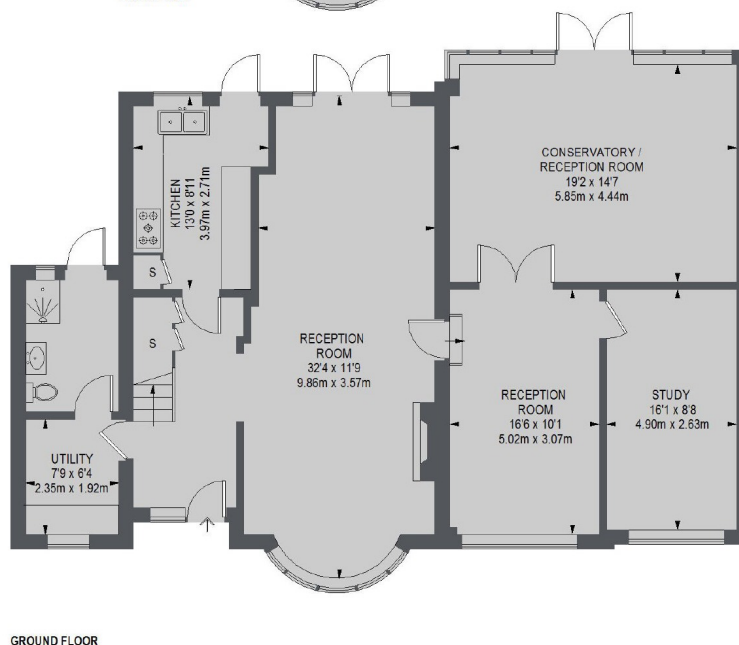
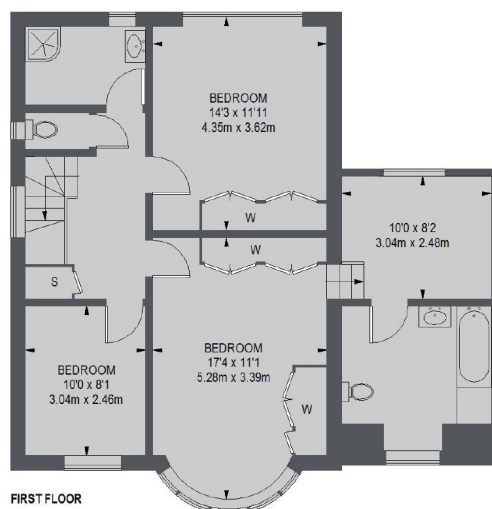
There is potential to further extend this property into the extensive loft (STPP). Few houses in the area offer such flexibility, off road parking and cultivated private garden full of flowers and fruit trees.

- Detached • Three/Four Bedrooms • Off-Street Parking •
- Large Garden • No Onward Chain • Potential To Extend (STPP) •



FLETCHERS

ESTATE AGENTS



TOTAL APPROX. FLOOR AREA 2153 SQ. FT. (200.1 SQ. M.)

Fletchers Chiswick Turnham
Green Terrace Sales
58 Turnham Green Terrace,
London, W4 1QP
020 8987 3000

Energy Rating: . We aim to make our particulars both accurate and reliable. However they are not guaranteed; nor do they form part of an offer or contract. If you require clarification on any points then please contact us, especially if you're traveling some distance to view. Please note that appliances and heating systems have not been tested and therefore no warranties can be given as to their good working order.