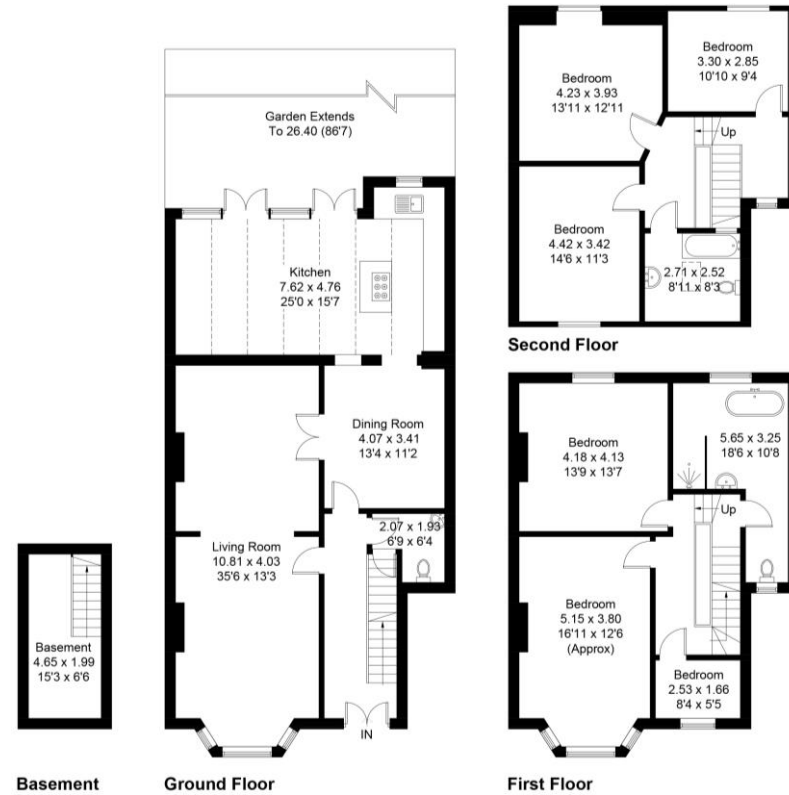






Approximate Gross Internal Area = 237.3 sq m / 2554 sq ft
 Basement = 9.5 sq m / 102 sq ft
 Total = 246.8 sq m / 2656 sq ft



This fantastic, five-bedroom, semi-detached, bay fronted, Victorian house retains many of its original features throughout. The ground floor accommodation includes a generously proportioned reception room with a large bay window and high ceilings, and a spacious, bright and modern kitchen incorporating a cooking and dining area. The kitchen boasts a fully functioning Aga and access to the well-kept rear garden via large double doors. On the first floor you find great-sized large double bedrooms, both with high ceilings and plenty of natural light, and a generous family bathroom with walk-in shower and free-standing bath. On the second floor you find the third, fourth and fifth bedroom, and a further bathroom, all of which are a good size. The property also benefits from a spacious cellar and a bike shed, and it would be perfect for a family looking for a beautiful, substantially sized home.

beresfordresidential.com
 020 7358 7979

