

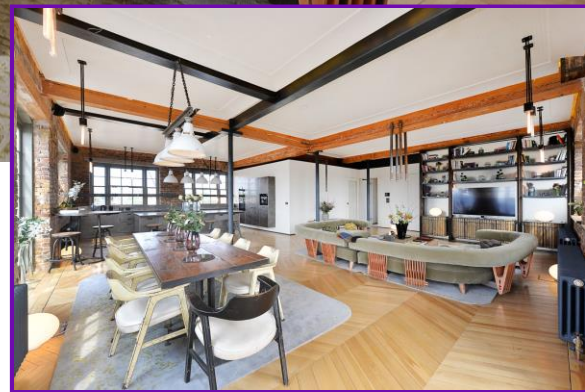
# ROKSTONE



## Chappell Lofts Chalk Farm NW1

Built in 1866-67, the Chappell piano factory is a magnificent Victorian industrial building, benefiting from retained period features, voluminous interiors, high ceilings and large sash windows. Founded in 1811 Chappell & Co provided pianos for nobility, gentry and musicians with clients including Beethoven, Strauss and Sibelius. For over 100 years the factory crafted the world's finest pianos, and during World War II produced canopies and propellers for the legendary supermarine spitfires, eventually closing in 1970. The building then became the chalk farm photographic studios, for artists, photographers and a models before undergoing a major refurbishment over the last three years to convert the building into smart offices with loft-apartments above.

Price £1,995 pw



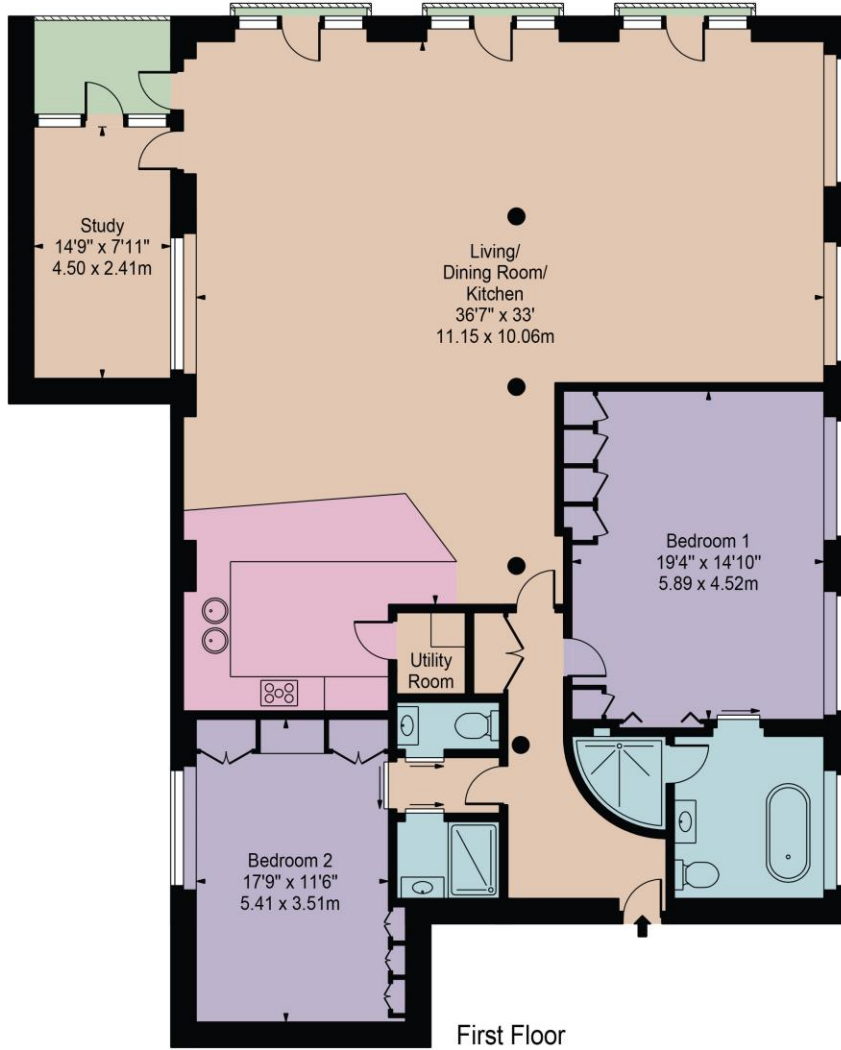
5 Dorset Street London W1U 6QJ  
Tel: 020 7580 2030 | Email: [enquiries@rokstone.com](mailto:enquiries@rokstone.com)  
[www.rokstone.com](http://www.rokstone.com)



# ROKSTONE

## Chappell Lofts

Approx. Gross Internal Area 2108 Sq Ft - 195.84 Sq M 



First Floor  
For Illustration Purposes Only - Not To Scale

This floor plan should be used as a general outline for guidance only and does not constitute in whole or in part an offer or contract. Any intending purchaser or lessee should satisfy themselves by inspection, searches, enquiries and full survey as to the correctness of each statement. Any areas, measurements or distances quoted are approximate and should not be used to value a property or be the basis of any sale or let.

