



- Leasehold
- Two double bedrooms
- Two bathrooms
- Private underground parking

## Francis House, Pump House Crescent, Brentford

A beautifully presented two double bedroom apartment set within an impressive newly built gated development.

£625,000





## Property Description

A beautifully presented two double bedroom apartment set within an impressive newly built gated development. The property benefits from a 24hr concierge, secure underground parking and a resident only gym on site. The living space comprises of a wide entrance hallway, two double bedrooms with fitted wardrobes, two bathrooms (one being en-suite to the master bedroom), a large kitchen/reception room with doors leading on to the private balcony and ample storage space throughout.

## Location

Francis House is part of the popular Kew Bridge West development, which is walking distance to Kew Gardens. The property is situated moments from Kew Bridge Mainline station and the Chiswick Roundabout, offering excellent transport links both into and out of the city centre, as well as a range of local shops, restaurants and other local amenities in the Kew, Chiswick and Brentford areas nearby.

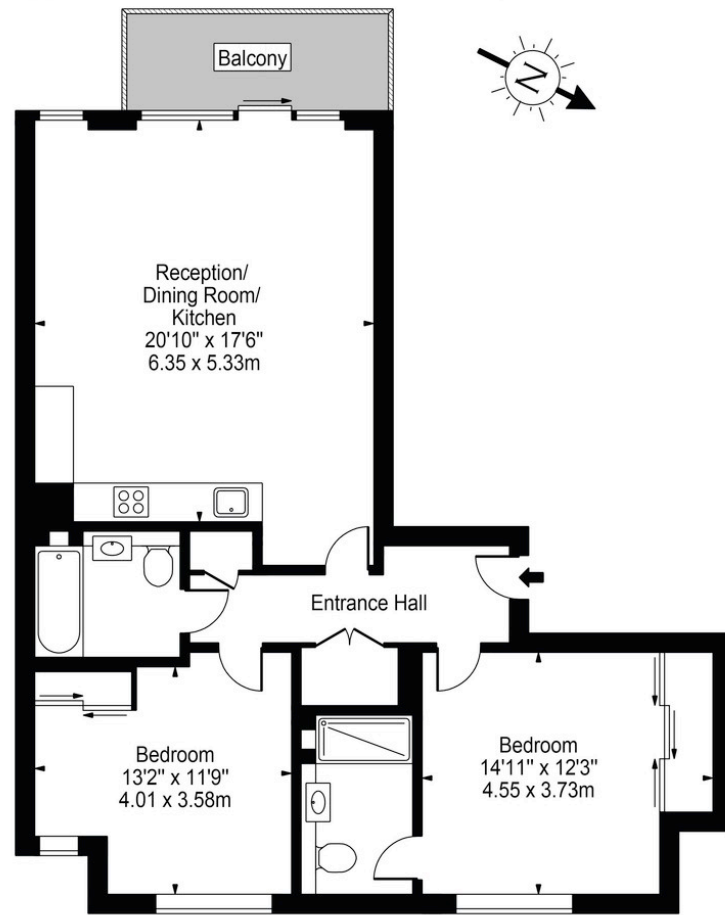






# Francis House, TW8

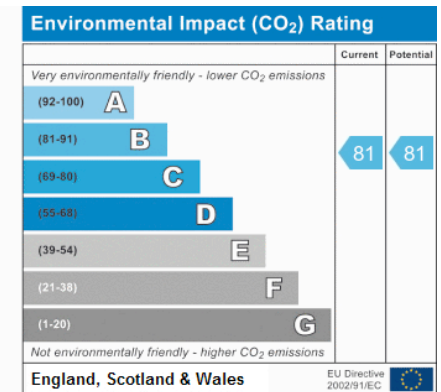
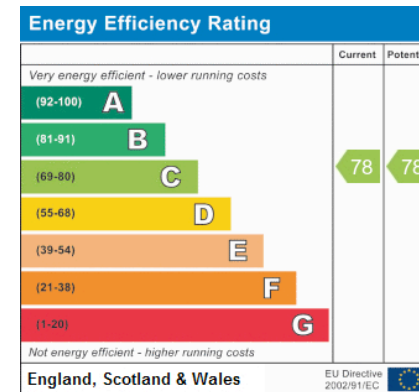
Approx. Gross Internal Area 932 Sq Ft - 86.59 Sq M



Fourth Floor

For Illustration Purposes Only - Not To Scale Floor Plan by Mira Nikolova Photography

This floor plan should be used as a general outline for guidance only and does not constitute in whole or in part an offer or contract. Any intending purchaser or lessee should satisfy themselves by inspection, searches, enquiries and full survey as to the correctness of each statement. Any areas, measurements or distances quoted are approximate and should not be used to value a property or be the basis of any sale or let.



[www.griffinstevens.co.uk](http://www.griffinstevens.co.uk)

020 8979 1597

[enquiries@griffinstevens.co.uk](mailto:enquiries@griffinstevens.co.uk)

Agents Note: Whilst every care has been taken to prepare these sales particulars, they are for guidance purposes only. All measurements are approximate and are for general guidance purposes only and whilst every care has been taken to ensure their accuracy, they should not be relied upon and potential buyers are advised to recheck the measurements