

# SNELLERS

ESTATE AGENTS

---



**Windsor Road, TW9**

**£945,000**

An attractive four bedroom end of terrace Victorian family home set within this popular residential cul-de-sac.





Arranged over three floors with charm and character throughout the accommodation offers a welcoming entrance hallway, good-sized bay fronted kitchen, large reception room with doors onto a south-facing garden with access to a shared side passageway.

On the first floor there are two generous double bedrooms, further single bedroom, separate W.C and a family bathroom. Into the loft can be found the master bedroom with plenty of storage space.

Windsor road is a popular residential cul-de-sac conveniently positioned for Kew Gardens underground station and local amenities within Kew Village


- End of Terrace • Victorian Family Home • Four Bedrooms •
- South-Facing Garden • Good Condition • Popular Location •

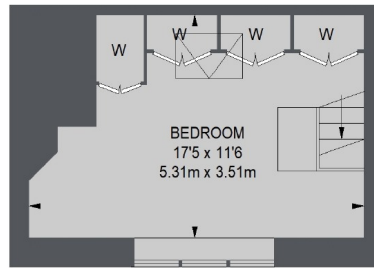




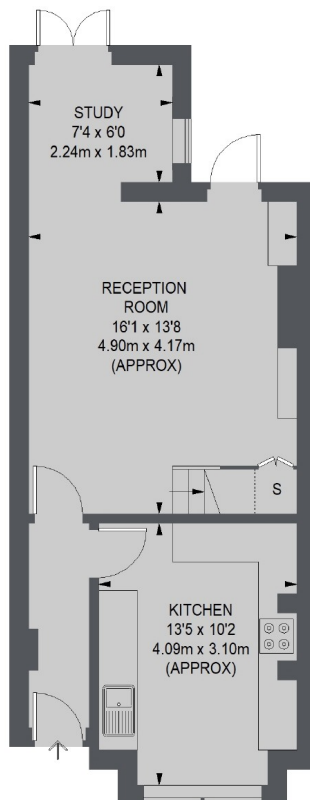
# SNELLERS

ESTATE AGENTS

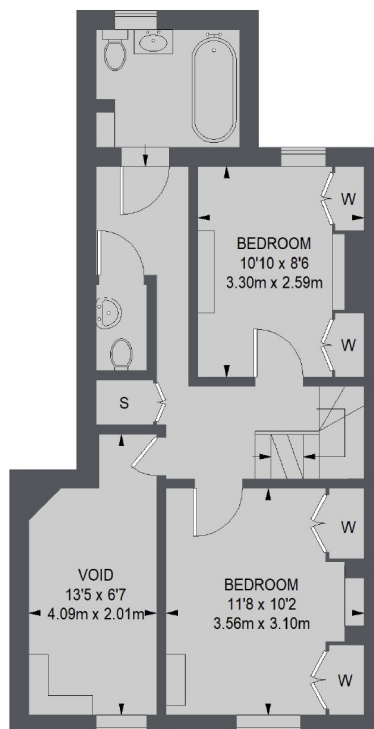
 = REDUCED HEADROOM  
BELOW 1.5 M / 5'0



**SECOND FLOOR**



**GROUND FLOOR**



**FIRST FLOOR**

TOTAL APPROX. FLOOR AREA  
(EXCLUDING VOID)  
1018 SQ. FT. (94.59 SQ. M.)

Snellers St. Margarets Sales  
36 Crown Road  
St Margarets  
TW1 3EH  
020 8892 8008  
[stmargaretssales@snellers.co.uk](mailto:stmargaretssales@snellers.co.uk)

Energy Rating: F We aim to make our particulars both accurate and reliable. However they are not guaranteed; nor do they form part of an offer or contract. If you require clarification on any points then please contact us, especially if you're traveling some distance to view. Please note that appliances and heating systems have not been tested and therefore no warranties can be given as to their good working order