

TO LET

- First floor flat
- Two double bedrooms
- Living/dining room
- Modern kitchen
- Offered part furnished
- Available beginning of February



Devonshire Road, Palmers Green, London, N13
£1,350 Per Calendar Month

Anthony Webb
ESTATE AGENTS



Devonshire Road, Palmers Green, London, N13

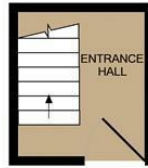
LOCATION! LOCATION! Offered to let a well presented spacious two double bedroom first floor Edwardian flat located in this most popular residential turning within five minutes walk of Palmers Green's shops, restaurants and mainline station (Moorgate). The flat benefits from a large living/dining room, a modern fitted kitchen with appliances, a modern bathroom, double glazing and central heating. The property is offered part furnished and is available from the beginning of February.



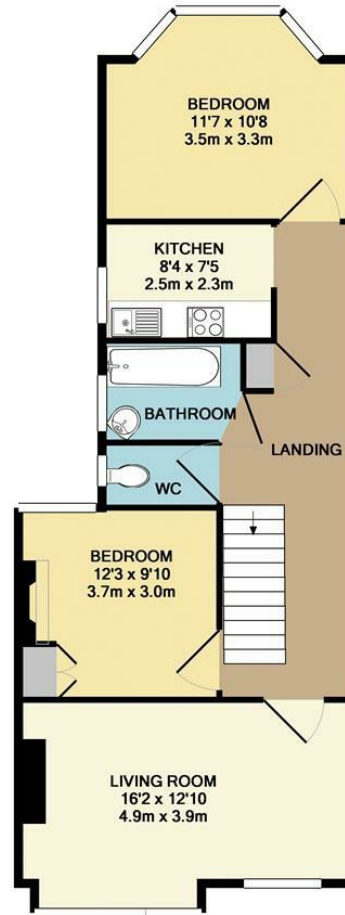
Energy Efficiency Rating		
	Current	Potential
Very energy efficient - lower running costs		
(92 plus) A		80
(81-91) B		
(69-80) C		
(55-68) D	50	
(39-54) E		
(21-38) F		
(1-20) G		
Not energy efficient - higher running costs		
England & Wales EU Directive 2002/91/EC		
Environmental Impact (CO ₂) Rating		
	Current	Potential
Very environmentally friendly - lower CO ₂ emissions		
(92 plus) A		82
(81-91) B		
(69-80) C		
(55-68) D	47	
(39-54) E		
(21-38) F		
(1-20) G		
Not environmentally friendly - higher CO ₂ emissions		
England & Wales EU Directive 2002/91/EC		



348 Green Lanes, Palmers Green, London N13 5TJ
020 8882 7888
palmersgreen@anthonywebb.co.uk
anthonywebb.co.uk



GROUND FLOOR



1ST FLOOR

TOTAL APPROX. FLOOR AREA 797 SQ.FT. (74.0 SQ.M.)

Whilst every attempt has been made to ensure the accuracy of the floor plan contained here, measurements of doors, windows, rooms and any other items are approximate and no responsibility is taken for any error, omission, or mis-statement. This plan is for illustrative purposes only and should be used as such by any prospective purchaser. The services, systems and appliances shown have not been tested and no guarantee as to their operability or efficiency can be given.
Made with Metropix ©2017