



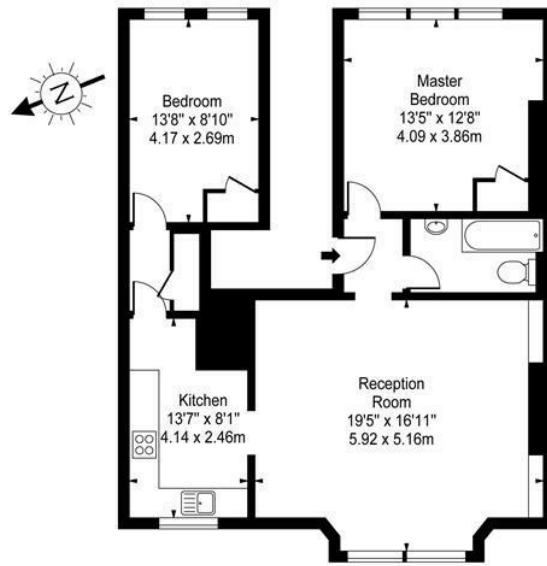
Brondesbury Road , NW6 6BP £450 Per Week

Stunning newly decorated very spacious two double bedroom apartment on the raise ground floor of this imposing period building along the popular Brondesbury road in the famous Queens Park NW6. The said property has been beautifully refurbished throughout comprises spacious lounge with high ceilings, large sash windows giving access to plenty of light, feature fire place and wooden flooring, newly refurbished fully fitted kitchen with all new appliances and tiled flooring, two double bedrooms both with fitted wardrobes and state of the art fully tiled bathroom, the property must be seen to be appreciated. Ideally located only a few minutes walk to Queens Park underground (Bakerloo line) and all the local amenities of the area. Call NorthWest 6 now. 02073282320.

6 Kilburn Bridge Kilburn High Road London NW6 6HT
t: 020 7328 2320 e: info@northwest-6.co.uk www.northwest-6.co.uk



Brondesbury Road, NW6

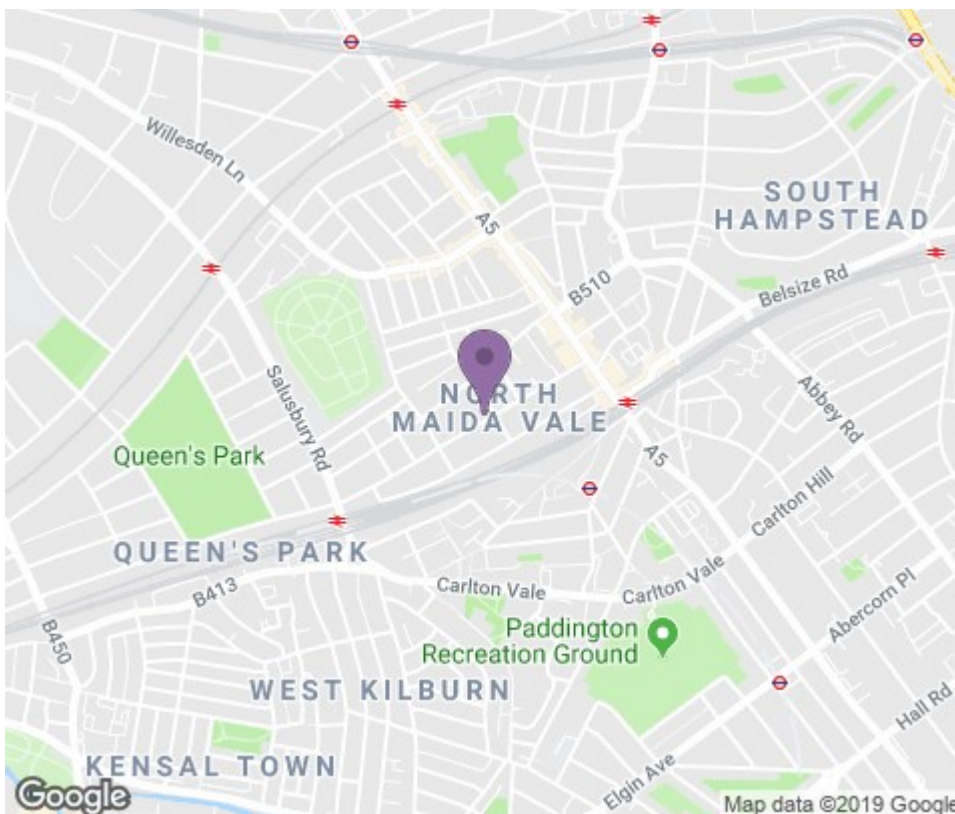


Upper Ground Floor

Approx Gross Internal Area **817 Sq Ft - 75.90 Sq M**

For Illustration Purposes Only - Not To Scale Floor Plan by www.nogaphotostudio.com Ref: No. 25124

This floor plan should be used as a general outline for guidance only. Any intending purchaser or lessee should satisfy themselves by inspection, searches, enquiries and full survey as to the correctness of each statement. Any areas, measurements or distances quoted are approximate and should not be used to value a property or be the basis of any sale or let.



Energy Efficiency Rating		
	Current	Potential
Very energy efficient - lower running costs		
(92 plus) A		
(81-91) B		
(69-80) C		
(55-68) D		
(39-54) E		
(21-38) F		
(1-20) G		
Not energy efficient - higher running costs		
England & Wales		EU Directive 2002/91/EC
Environmental Impact (CO ₂) Rating		
	Current	Potential
Very environmentally friendly - lower CO ₂ emissions		
(92 plus) A		
(81-91) B		
(69-80) C		
(55-68) D		
(39-54) E		
(21-38) F		
(1-20) G		
Not environmentally friendly - higher CO ₂ emissions		
England & Wales		EU Directive 2002/91/EC