



Telferscot Road, SW12

£3,700 PCM

A recently renovated four double bedroom townhouse, split over three floors is ideal for a professional family or professional sharers.

- Reception Room
- Kitchen Breakfast Room
- Four Double Bedrooms
- Three Bathrooms
- Private Garden
- Unfurnished

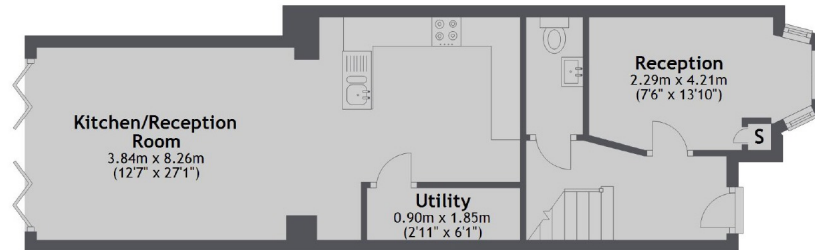


The ground floor comprises a bright reception room, open plan kitchen breakfast room with bi folding doors leading out to a landscaped garden, utility room and WC. The first floor includes two double bedrooms both with en-suites and further benefits from two further double bedrooms on the top floor and a family bathroom.

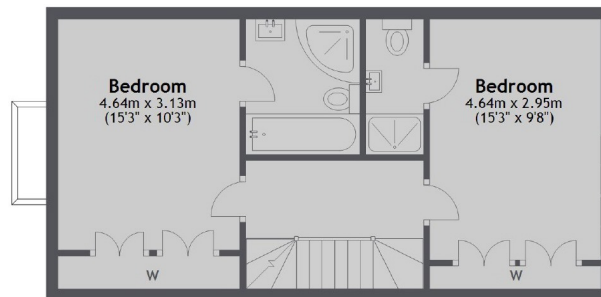
Telferscot Road is located in the popular Hyde Farm Estate situated within close proximity to the green open spaces of Tooting Bec Common and Balham Underground and Overground station.



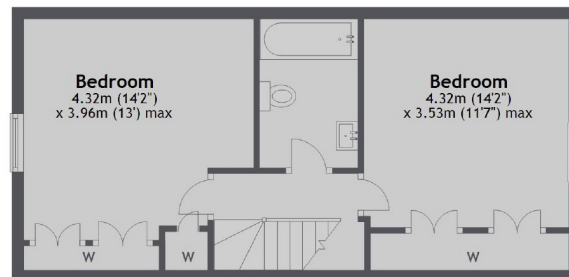
Ground Floor



First Floor



Second Floor



Total area: approx. 131.1 sq. metres (1411.6 sq. feet)

Jacksons Balham
8-11 Balham Station Road
London
SW12 9SG
020 8675 6565
balham.sales@jacksonsestateagents.com

Energy Rating: We aim to make our particulars both accurate and reliable. However they are not guaranteed; nor do they form part of an offer or contract. If you require clarification on any points then please contact us, especially if you're traveling some distance to view. Please note that appliances and heating systems have not been tested and therefore no warranties can be given as to their good working order.