

ROKSTONE



Montrose Court, Knightsbridge SW7

A wonderful recently refurbished two/three bedroom apartment located on the first floor, with lift and 24 hour porter, in this prestigious building in Knightsbridge situated moments away from Hyde Park. Approximately 112.2 sq m (1,207 sq ft). The apartment features an impressive west-facing open plan reception/dining room, with bespoke fixtures and fittings, leading onto a modern and stylish kitchen with integrated appliances. The apartment further benefits from a spacious master bedroom suite, a second en-suite double bedroom, an additional study/third bedroom and a guest cloakroom.

Montrose Court is situated at the northern end of Prince's Gate, offering easy access to the open spaces of Hyde Park and the Royal Albert Hall. The property is well placed for a selection of shops and world class museums as well as the public transport facilities of South Kensington.

Price £3,500,000

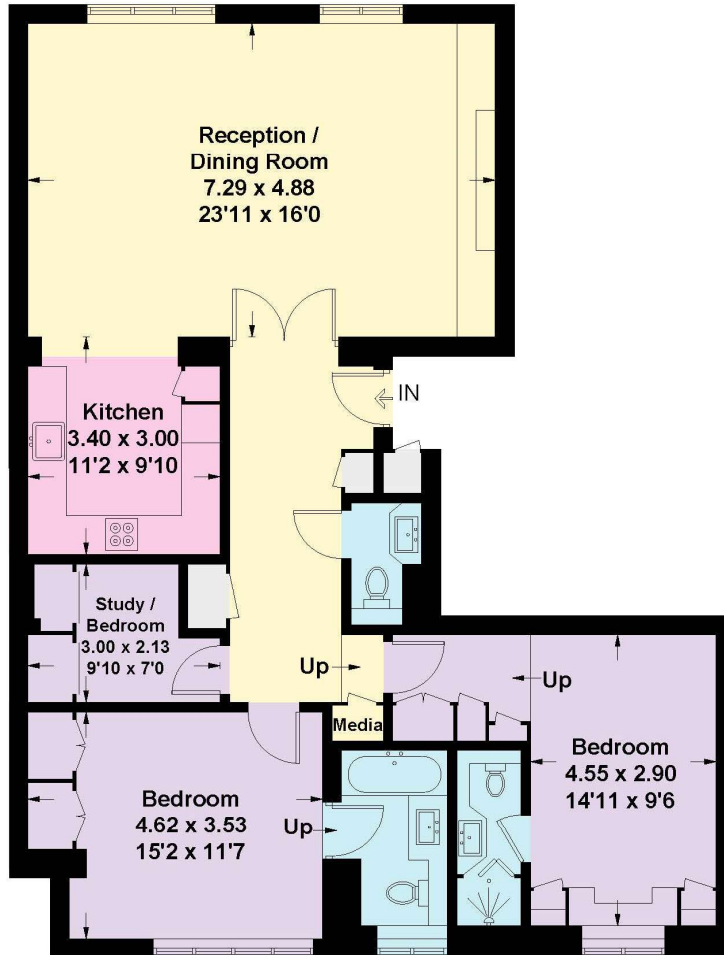


5 Dorset Street London W1U 6QJ
Tel: 020 7580 2030 | Email: enquiries@rokstone.com
<http://www.rokstone.com>

ROKSTONE

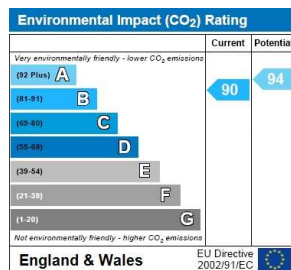
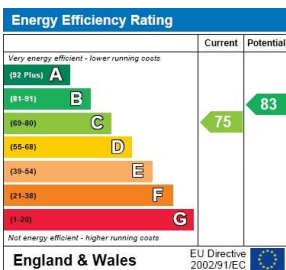
Montrose Court, Princes Gate, SW7

Approximate Gross Internal Area = 112.1 sq m / 1207 sq ft
(Including Outside Cupboard)



First Floor

This plan is for layout guidance only. Not drawn to scale unless stated. Windows and door openings are approximate. Whilst every care is taken in the preparation of this plan, please check all dimensions, shapes and compass bearings before making any decisions reliant upon them. (ID502979)



Terms

Local Authority: London Borough of Kensington and Chelsea
Tenure: Leasehold 142 Years
Service Charge: £8,000PA
Ground Rent: £175PA