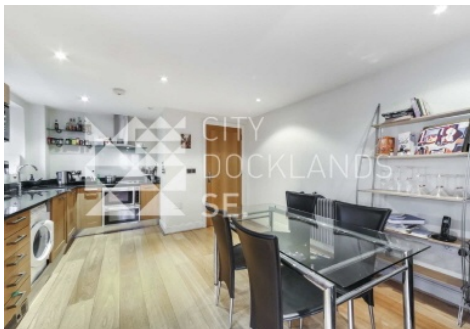




CITY
DOCKLANDS
SE.



Bermondsey Wall West, SE16

£390 pw (£1,690.00pcm)

Large one bedroom warehouse style apartment with exposed brickwork located on the bank of the River Thames. This Berkeley built apartment is in excellent condition throughout and benefits from a communal garden with Thames side seating.

Tempus Wharf is a riverside development Located just East of Shad Thames, famed for its warehouse conversions and cobbled streets.

- One Bedroom Apartment • Warehouse Conversion • Excellent Condition •
- Open Plan Living • Exposed Brickwork • 525 sq ft •