



6 Wardington Court, Kingsthorpe, Northampton, NN2 8FR

Wardington Court is a MaCarthy & Stone development comprising 56 Assisted Living retirement apartments in close proximity to a delightful mix of historic architecture, beautiful green parklands, independent shops and supermarkets in Kingsthorpe whilst providing easy access to Northampton Town Centre and further afield. With Assisted Living at Wardington Court, homeowners have all the independence of their own private apartment together with the reassurance of an on-site Estates Team providing flexible care and support whenever they need a little extra help, day or night. The development also has a spacious homeowners' lounge for socialising and a table service restaurant serving delicious meals 365 days per year. The spacious accommodation of the apartment comprises entrance hall, lounge/dining room, kitchen with integrated oven and hob, two bedrooms and a large bathroom with a walk in shower. The apartment also offers under floor heating throughout. Externally are well maintained communal gardens. The apartment is offered in excellent condition and an early viewing is highly recommended.

£265,000

6 Wardington Court, Kingsthorpe, Northampton, NN2 8FR

ACCOMODATION

Ground Floor

Entrance Hall

Spacious entrance hall with potential to build in cloaks cupboards or even a separate WC. Airing cupboard housing hot water cylinder.

Lounge/Dining Room

17' 10" Max x 17' 6" Max (5.44m x 5.33m) Double glazed windows and door leading and over looking the communal gardens. TV point.



Kitchen

10' 1" x 6' 10" (3.07m x 2.08m) Fitted kitchen comprising a range of base and wall mounted units, fitted ceramic hob and oven, double glazed window to the side.

Bedroom 1

18' 7" Max x 10' 1" Max (5.66m x 3.07m) Spacious room with built in wardrobe, two double glazed windows to the side.

Bedroom 2

11' 7" x 7' 1" (3.53m x 2.16m) Double glazed window to the side.

Bathroom/Wet Room

Panelled bath, WC, wash hand basin, walk in shower area, fully tiled.

Externally

The apartment comes with one allocated parking bay. There are well maintained communal gardens surrounding the development.

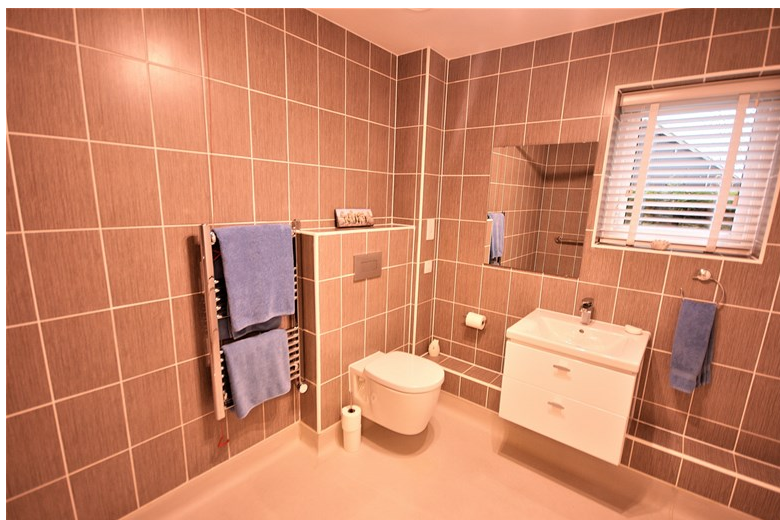


6 Wardington Court, Kingsthorpe, Northampton, NN2 8FR



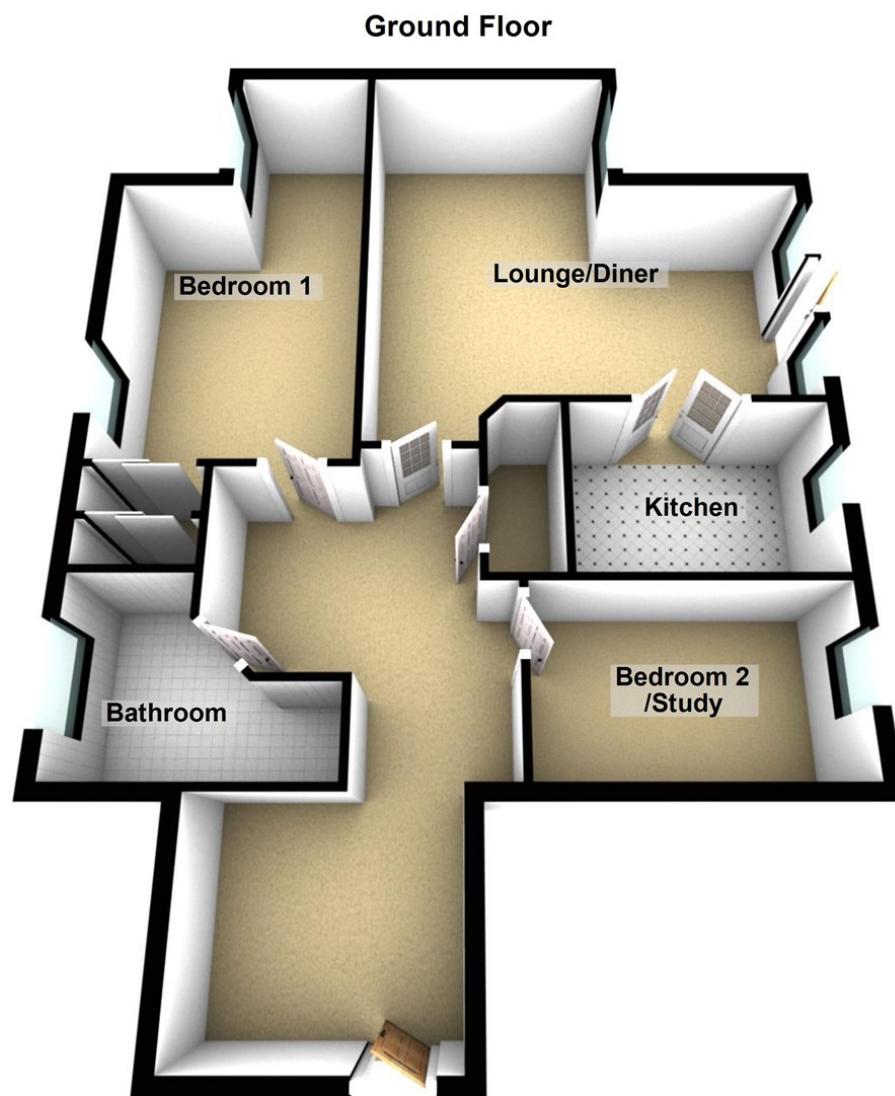
Additional information

We are informed that the length of lease remaining is 997 years. The service charge is £741 per month for a two bedroom apartment. Ground Rent £247 six monthly. Council tax band D.



6 Wardington Court, Kingsthorpe, Northampton, NN2 8FR





6 Wardington Court, Kingsthorpe, Northampton, NN2 8FR

