

ROKSTONE



Sheffield Terrace Kensington W8

This contemporary two bedroom apartment is situated in an elegant mansion block in the heart of Kensington benefiting from beautiful communal gardens, lift and efficient porters. The apartment has been furnished to a high standard with excellent attention to detail and top of the range appliances. The dual aspect reception room and master bedroom has views over the communal gardens. Situated close to Kensington Church Street and Kensington High Street and with excellent transport links.

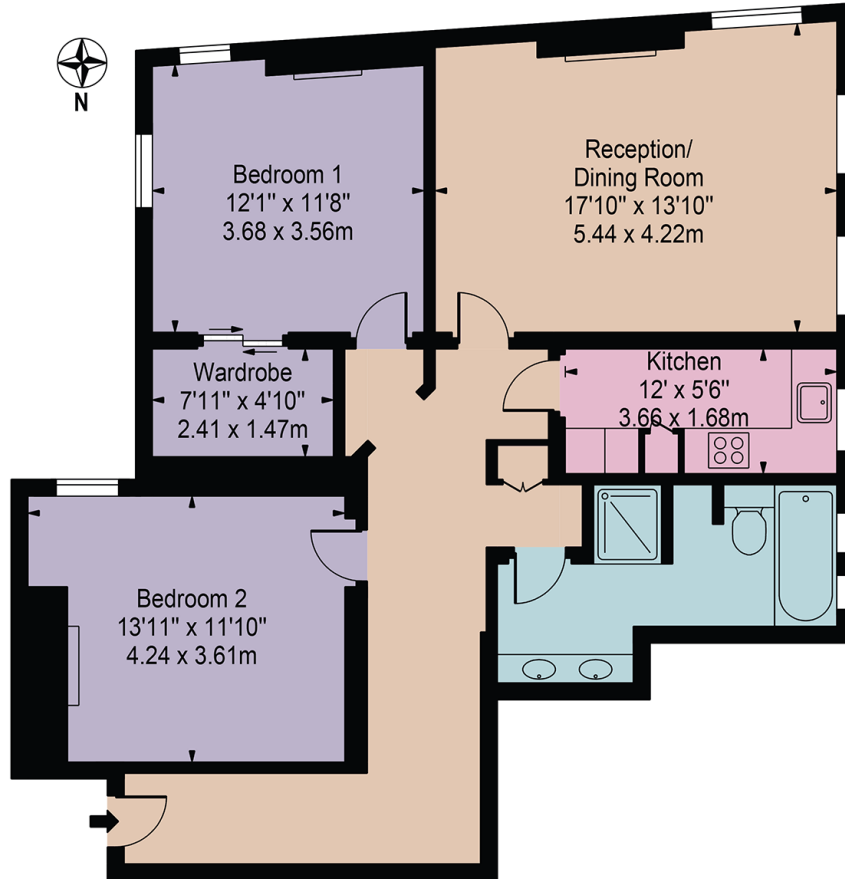
Price £1,150 pw



Olivia McSweeney | Head of Lettings
D: 020 3219 5679 | M: 07584633058 | E: olivia@rokstone.com
5 Dorset Street, London, W1U 6QJ

Campden House, Sheffield Terrace

Approx. Gross Internal Area 1016 Sq Ft - 94.39 Sq M



Third Floor

For Illustration Purposes Only - Not To Scale

This floor plan should be used as a general outline for guidance only and does not constitute in whole or in part an offer or contract. Any intending purchaser or lessee should satisfy themselves by inspection, searches, enquiries and full survey as to the correctness of each statement. Any areas, measurements or distances quoted are approximate and should not be used to value a property or be the basis of any sale or let.

