



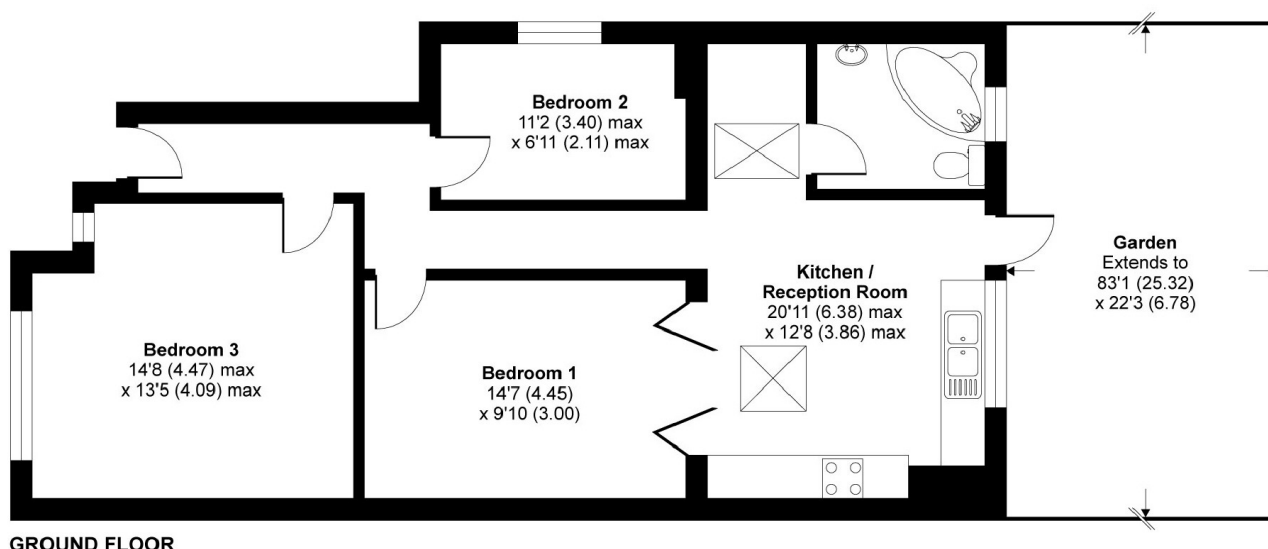
Norbury Crescent, SW16

£1,500 PCM

A three bedroom ground floor flat within close proximity of Norbury Station. The property benefits from off street parking and a private garden.

- Three Bedrooms
- Spacious
- Private Rear Garden
- Off Street Parking
- Good Decorative Order
- Close to Station

Tenants fees apply: £180 per tenancy towards administration, £60 reference fee per tenant and £144 for a professional check in (All inc of VAT).



GROUND FLOOR

APPROX. GROSS INTERNAL FLOOR AREA 811 SQ FT 75.3 SQ METRES

Norbury Crescent, London, SW16

Copyright nichecom.co.uk 2014 Produced for Jacksons the Independent Estate Agents REF : 674325

Jacksons Streatham
1-3 De Montfort Parade
Streatham High Road
Streatham
London
SW16 1BU
020 8677 9900

Energy Rating: C We aim to make our particulars both accurate and reliable. However they are not guaranteed; nor do they form part of an offer or contract. If you require clarification on any points then please contact us, especially if you're traveling some distance to view. Please note that appliances and heating systems have not been tested and therefore no warranties can be given as to their good working order.