



13 Delamere Drive
Swindon, SN3 4XB



13 Delamere Drive, Swindon,
SN3 4XB

Situated on a **CORNER PLOT**, in the popular location of **STRATONE VILLAGE** is this **DETACHED FOUR BEDROOM** family home. The property benefits from **SPACIOUS LIVING ACCOMMODATION**, with **FOUR RECEPTIONS**, master bedroom with **EN-SUITE**. There is an good sized rear garden & **DRIVEWAY FOR FOUR CARS**

- Detached
- Family Home
- Four Bedrooms
- Four Reception Rooms
- Master En-suite
- Corner Plot
- Cloakroom
- Driveway Parking for four cars

£330,000



Description

Situated on a CORNER PLOT, in the popular location of STRATONE VILLAGE is this DETACHED FOUR BEDROOM family home. The property benefits from SPACIOUS LIVING ACCOMMODATION, with FOUR RECEPTIONS, cloak room, master bedroom with EN-SUITE SHOWER ROOM. Externally there is an good sized rear garden & DRIVEWAY FOR FOUR CARS. ERV: £1,100pcm.

Situation

Stratone Village is a well established area offering numerous local amenities and good primary and secondary schooling, quick access to the A419 c.1.5 miles and Swindon Town Centre c.4 miles with mainline railway links to London Paddington and Bristol.

Property Information

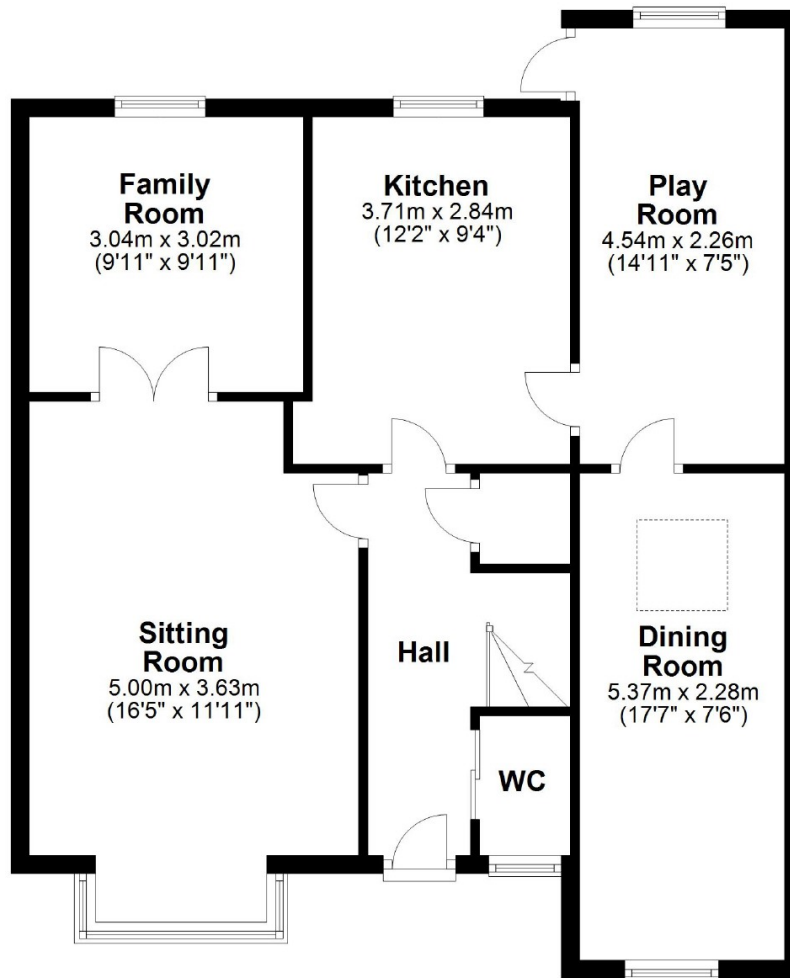
Tenure : Freehold
Gas Central Heating
Council Tax Band 'C'
EPC 'D'



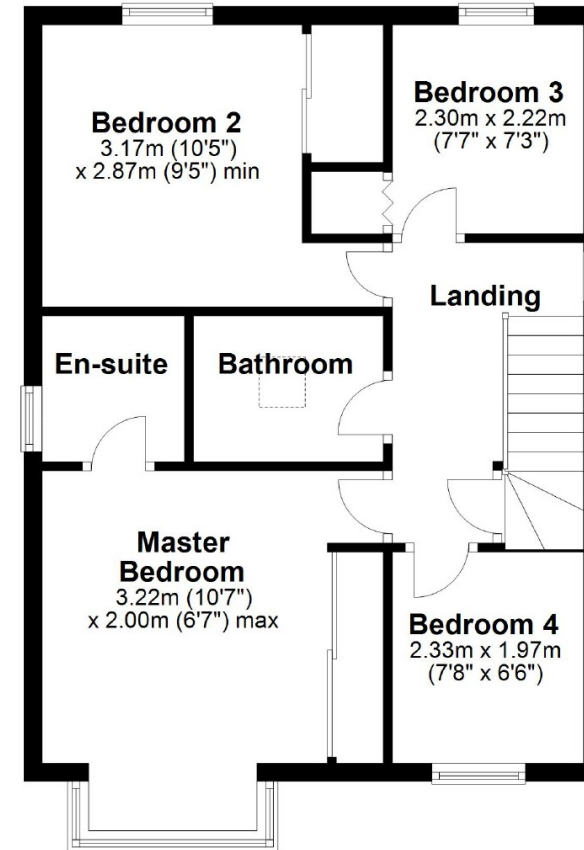
These particulars, whilst believed to be accurate are set out as a general outline only for guidance and do not constitute any part of an offer or contract. Intending purchasers should not rely on them as statements of representations of fact, but must satisfy themselves by inspection or otherwise as to their accuracy. No person in this firm's employment has the authority to make or give any representation or warranty in respect of the property. All measurements and distances are approximate only.



Ground Floor



First Floor



Unit B, Millgrove House, 59 Millgrove Street, Redhouse, Swindon,
Wiltshire, SN25 2FW
Tel: 01793 683144
Fax:

www.strakers.co.uk

■ Chippenham
■ Corsham

■ New Homes
■ Malmesbury

■ Swindon
■ Devizes

■ Auction
■ Lettings