



Beaconsfield

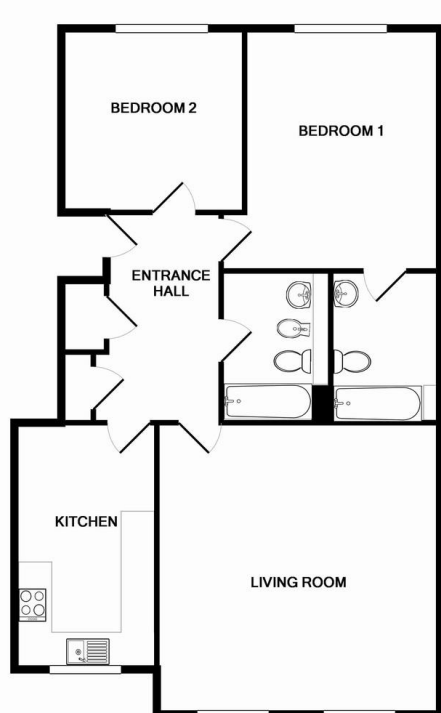
£1,425 pcm

Newly Refurbished Light and spacious two bedroom, two bathroom first floor apartment in this sought after development. Located in historic Beaconsfield Old Town with fantastic restaurants and great road links to M40 and M25. The property offers allocated parking. New carpets and redecorated throughout. Unfurnished. EPC rating C. Available Now.

Ashington Page

www.AshingtonPage.co.uk

LETTINGS & PROPERTY MANAGEMENT



TOTAL APPROX. FLOOR AREA 956 SQ.FT. (88.8 SQ.M.)

Whilst every attempt has been made to ensure the accuracy of the floor plan contained here, measurements of doors, windows, rooms and any other items are approximate and no responsibility is taken for any error, omission, or mis-statement. This plan is for illustrative purposes only and should be used as such by any prospective purchaser. The services, systems and appliances shown have not been tested and no guarantee as to their operability or efficiency can be given
Made with Metropix ©2013

Features –

- Two bedrooms
- En-suite to master bedroom
- Spacious lounge with Juliette Balcony
- First floor, lifts to all floors
- Allocated parking
- Available Now
- EPC rating C

For an appointment to view this property, please contact
Ashington Page Lettings on **01494 685 518**

Email Lettings@ashingtonpage.co.uk

4 Burkes Parade, Beaconsfield, Buckinghamshire, HP9 1NN

Agents Note

Whilst every care has been taken to prepare these sales particulars, they are for guidance purposes only. All measurements are approximate are for general guidance purposes only and whilst every care has been taken to ensure their accuracy, they should not be relied upon and potential buyers are advised to recheck the measurements

www.AshingtonPage.co.uk

Ashington Page

LETTINGS & PROPERTY MANAGEMENT