

# FLETCHERS

ESTATE AGENTS



## Linden Gardens, W4

£1,138 Per week ( pcm)

A recently refurbished five bedroom house perfect in an incredible area perfect for a family. The lower ground floor boasts plenty of entertaining space with an exceptional kitchen and dining area with bi-folding doors to the rear opening on to the private patio garden. The raised ground floor offers two generous rooms with feature detail, stunning curvature to the walls and high ceilings. The first floor contains the master bedroom with a walk in wardrobe and en-suite as well as another double bedroom and further bathroom. The second floor comprises two more double bedrooms with plenty of eave storage and a third bathroom. There is solid oak flooring throughout the house with a rare solid oak staircase. Linden Gardens is ideally located immediately off Chiswick High Road where there is an abundance of local shops, restaurants and excellent access to public transport.

# FLETCHERS

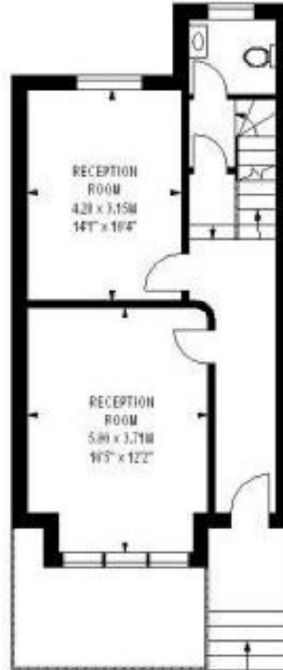
ESTATE AGENTS

## Linden Gardens, W4

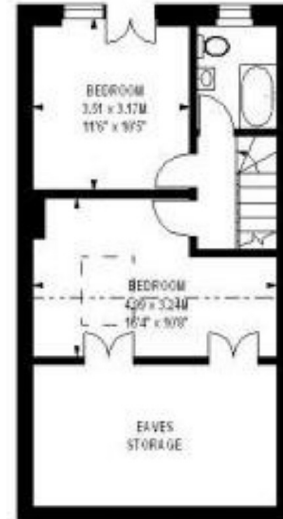
Approximate gross internal area  
205.22 sq m / 2209 sq ft  
(Including Eaves Storage)  
Eaves Storage  
14.49 sq m / 156 sq ft



Lower Ground Floor  
658 sq ft



Ground Floor  
526 sq ft



Second Floor  
386 sq ft



First Floor  
563 sq ft

Fletchers Chiswick High Road Lettings  
86 Chiswick High Road, Chiswick,  
London, W4 1SY  
020 8742 4100  
[chiswicklettings@fletcherestates.com](mailto:chiswicklettings@fletcherestates.com)

Energy Rating: . We aim to make our particulars both accurate and reliable. However they are not guaranteed; nor do they form part of an offer or contract. If you require clarification on any points then please contact us, especially if you're traveling some distance to view. Please note that appliances and heating systems have not been tested and therefore no warranties can be given as to their good working order.