



Poynders Road, SW4

£3,750 PCM

SHORT LET. A stunning four bedroom terrace house available for short let for three months from June- August 2019.

- Short Let- June-August 2019
- Townhouse
- Four Double Bedrooms
- Two Bathrooms
- Off- Street Parking
- 0.6 Miles To Clapham South



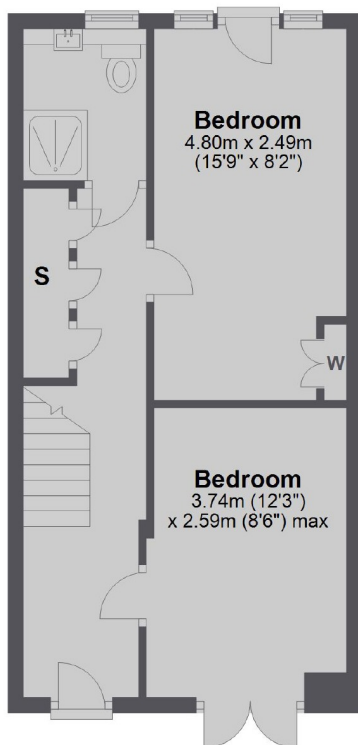
Secluded from the main road by a brick wall and entered via a gated door leading onto the front garden and in-turn the main entrance this Townhouse comprises internally, to the ground floor; entrance hallway, two double bedrooms, shower room and ample built-in storage cupboards. The whole of the first floor accommodates an open plan kitchen/ reception room making this a larger than average entertaining space. The second floor has a further two double bedrooms both with built-in wardrobes, family bathroom and an additional built-in storage cupboard. The property further benefits from an off-street parking space.

Located on a popular tree lined road and within 0.6 of a mile to Clapham South tube (Northern line). The desired Abbeville Village is a short walk away with its shops and restaurants located on Abbeville Road.

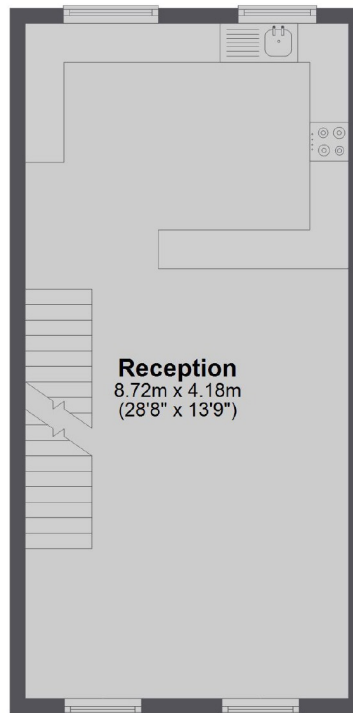




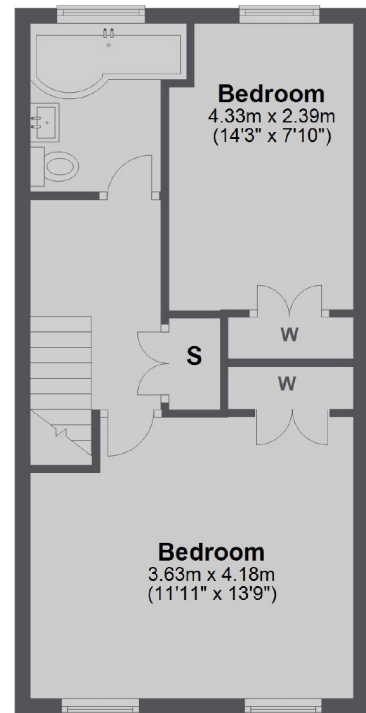
Ground Floor



First Floor



Second Floor



Total area: approx. 109.0 sq. metres (1172.9 sq. feet)

Jacksons Clapham
73 Abbeville Road
London
SW4 9JN
020 8875 7995
clapham.lettings@jacksonsestateagents.com

Energy Rating: D We aim to make our particulars both accurate and reliable. However they are not guaranteed; nor do they form part of an offer or contract. If you require clarification on any points then please contact us, especially if you're traveling some distance to view. Please note that appliances and heating systems have not been tested and therefore no warranties can be given as to their good working order.