

# Woodholls



## **Woodlands barns, Aylesbury, HP18 0RH** **£1,395 Per month**

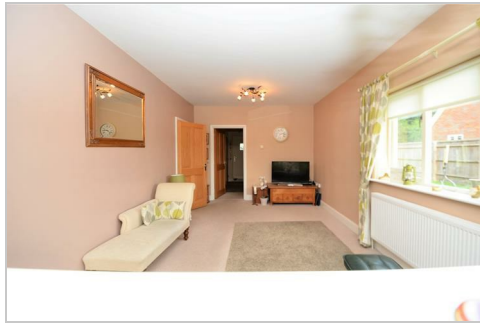
Situated between Aylesbury and Bicester - Enjoying a country location an EXCEPTIONAL BARN STYLE DWELLING constructed just 5 years ago to an individual design. The pristine interior benefits from oil fired central heating and quality interior fittings and fixtures.

A MUST BE SEEN AND BEAUTIFULLY PRESENTED HOME AT ONLY £1,395 PCM (Including £45.00 service charge for private drainage)  
rental of £1425 to include pet / pets subject to landlords approval

- \* Reception hall and cloakroom
- \* Generous sitting room
- \* Dining room linking to

44 Buckingham Street, Aylesbury, Bucks, HP20 2LL

Telephone: 01296 433 393 Email: [info@woodholls.co.uk](mailto:info@woodholls.co.uk) Website: [www.woodholls.co.uk](http://www.woodholls.co.uk)



Energy Efficiency Rating		
	Current	Potential
Very energy efficient - lower running costs		
(92 plus) <b>A</b>		
(81-91) <b>B</b>		
(69-80) <b>C</b>	74	83
(55-68) <b>D</b>		
(39-54) <b>E</b>		
(21-38) <b>F</b>		
(1-20) <b>G</b>		
Not energy efficient - higher running costs		
England & Wales EU Directive 2002/91/EC		
Environmental Impact (CO <sub>2</sub> ) Rating		
	Current	Potential
Very environmentally friendly - lower CO <sub>2</sub> emissions		
(92 plus) <b>A</b>		
(81-91) <b>B</b>		
(69-80) <b>C</b>		
(55-68) <b>D</b>		
(39-54) <b>E</b>		
(21-38) <b>F</b>		
(1-20) <b>G</b>		
Not environmentally friendly - higher CO <sub>2</sub> emissions		
England & Wales EU Directive 2002/91/EC		