



## Manor Road, TW2

£300,000

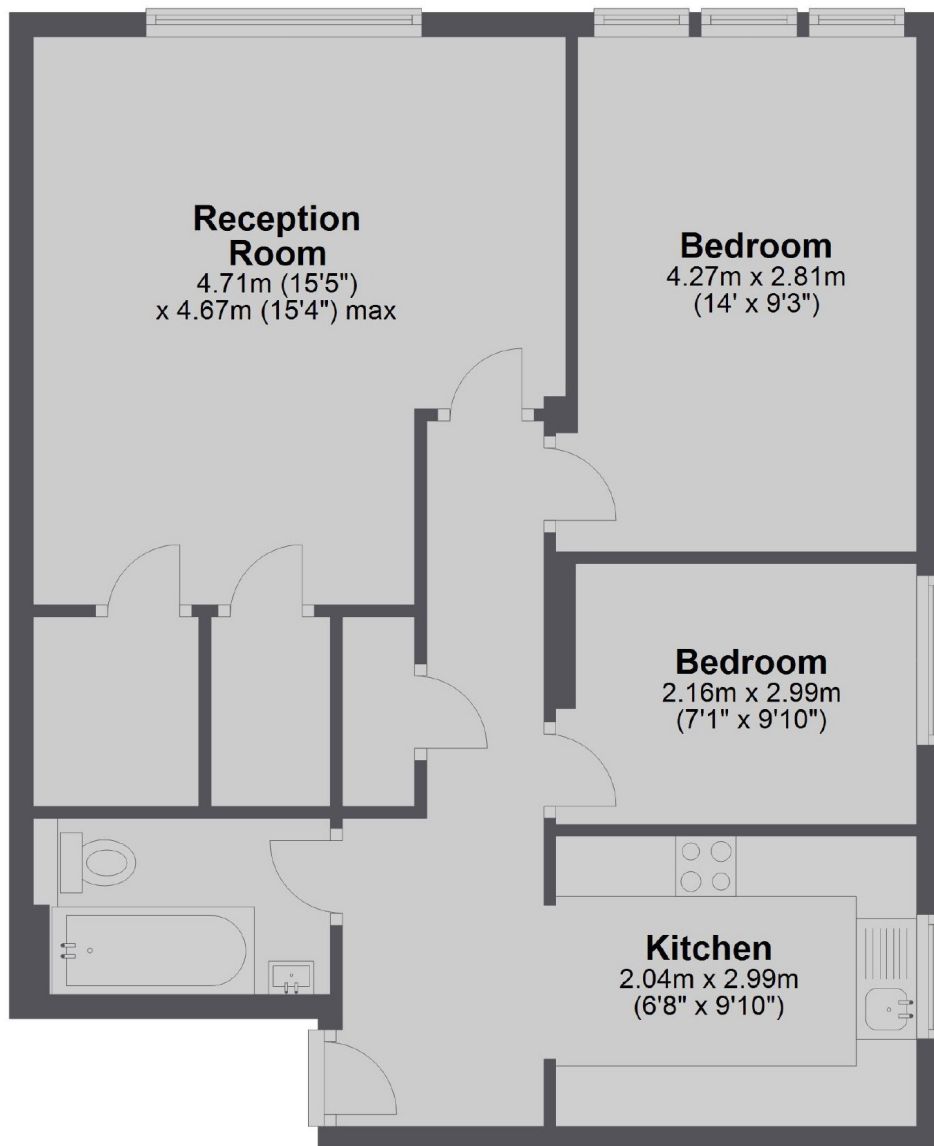
Offers in Excess of £300,000

A spacious and well presented purpose built apartment with two good sized bedrooms, a large sunny living room, a newly fitted kitchen and a family bathroom. The property further benefits from a garage, off street parking, gas fired central heating, Combi boiler, double glazing, secure intercom entry system and no onward chain.

Manor Road is a popular cul-de-sac located off Staines Road, within one mile of Twickenham town centre and train station and just 0.6 miles from Twickenham Green. Strawberry Hill Village is just 0.8 miles away with its mainline station and array of shops and cafe's. The area is renowned for its excellent state and private schools.

- Two Double Bedrooms • Well Presented • Desirable Location •
- Garage and Parking • Communal Gardens • No Onward Chain •

## Ground Floor



Total area: approx. 63.0 sq. metres (678.2 sq. feet)

Snellers Twickenham Sales  
74 Heath Road  
Twickenham  
TW1 4BW  
020 8892 5555  
[twickenhamsales@snellers.co.uk](mailto:twickenhamsales@snellers.co.uk)

Energy Rating: D We aim to make our particulars both accurate and reliable. However they are not guaranteed; nor do they form part of an offer or contract. If you require clarification on any points then please contact us, especially if you're traveling some distance to view. Please note that appliances and heating systems have not been tested and therefore no warranties can be given as to their good working order