



TO LET

Mannington Place, Triangle

£935 pcm + security deposit

Fantastic furnished two Double Bedroom property in Westcliff. With great access to both the town centre and the beach this property has a lot to offer.

- **Apartment**
- **Two Double Bedrooms**
- **Furnished**
- **Large Reception**
- **Council Tax Band B**
- **Family Bathroom**
- **Gas Central Heating**
- **Washing Machine**
- **Energy Rating : C**



**£935 pcm +
security deposit**

**Mannington Place,
Bournemouth,**

BH2 5NA

A Two Double Bedroom Apartment which is furnished to an extremely standard throughout. The property is in the heart of Bournemouth town centre, moments' walk from the numerous shops, bars and restaurants that the town centre has to offer as well as being close to the JPMorgan bus route.

The property benefits from a large open plan lounge/ kitchen /diner. The lounge has two sofas, sideboard and nice breakfast table. The kitchen is fully fitted with large fridge freezer, washing machine & microwave.

The Bathroom is fully tiled and has a bath and shower. The bedrooms have double bed and bedrooms are fully furnished with wardrobes and drawers.

The property further benefits

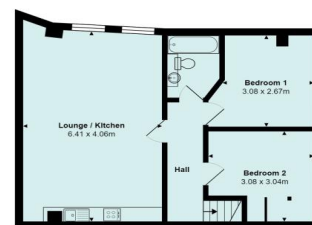
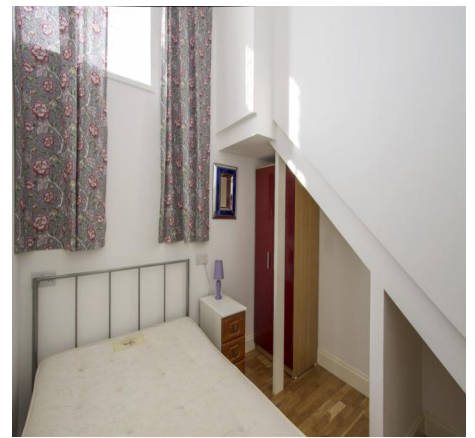
>> Key Features

- Apartment
- Two Double Bedrooms
- Furnished
- Large Reception
- Family Bathroom
- Gas Central Heating
- Washing Machine
- Energy Rating : C
- Council Tax Band B

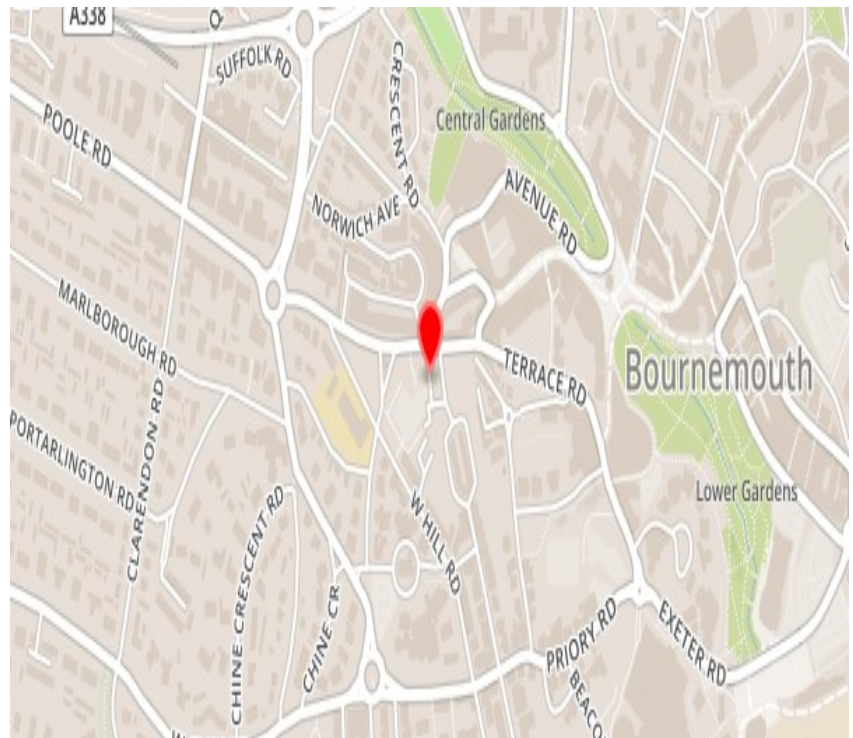
**£935 pcm +
security deposit**



from gas central heating and full
double glazing. This property is a
must see for working
professionals.





Directions



Energy Efficiency Rating			Environmental Impact (CO ₂) Rating		
	Current	Potential		Current	Potential
Very energy efficient - lower running costs			Very environmentally friendly - lower CO ₂ emissions		
(92-100) A			(92-100) A		
(81-91) B			(81-91) B		
(69-80) C	77	77	(69-80) C	80	80
(55-68) D			(55-68) D		
(39-54) E			(39-54) E		
(21-38) F			(21-38) F		
(1-20) G			(1-20) G		
Not energy efficient - higher running costs			Not environmentally friendly - higher CO ₂ emissions		
England	EU Directive 2002/91/EC 		England	EU Directive 2002/91/EC 	

THE PROPERTY MISDESCRIPTIONS ACT 1991: Any areas, measurements or distances are approximate. Land measurements are provided by the vendor and buyers are advised to obtain verification from their solicitor. The text, photographs and plans are for guidance only and are not necessarily comprehensive. Items shown in the property photographs are not included unless specifically mentioned within the sales particulars although they may be available by separate negotiation. Homes & Steeple Ltd cannot verify that the fixtures and fittings, equipment or services are in working order or fit for the purpose and buyers are advised to obtain verification from their solicitor. The tenure of a property is based upon information supplied by the seller and buyers are advised to obtain verification from their solicitor.