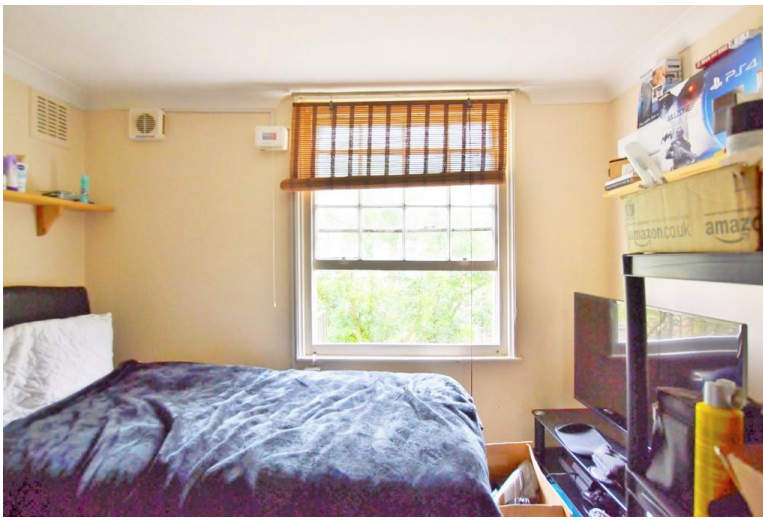




PHILLIPS & STILL

BRUNSWICK PLACE, HOVE  
ASKING PRICE OF £120,000





The perfect investment purchase! Situated in one of Hove's hotspots, this third floor period conversion apartment would be ideal for a buy to let or a holiday home and is being offered with no ongoing chain.

Location wise, you can literally step out of your property and you'll be central to everything you need, including shops, seafront restaurants, trendy bars and coffee shops.

If you need to commute to Gatwick or London then Hove's railway station is only within a few minutes walk. Living here would be really exciting and you would be certain of experiencing Brighton and Hove's Cosmopolitan lifestyle and atmosphere to the full!

### THIRD FLOOR

#### STUDIO ROOM

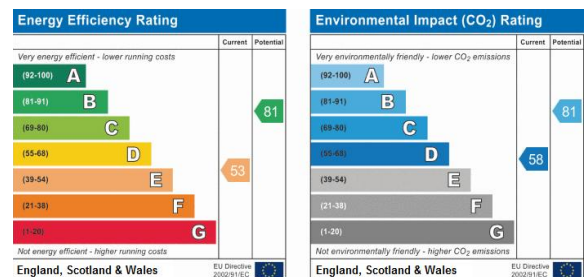
10max' x 12' 4" (3.05m x 3.76m)

#### SHOWER ROOM



**TOTAL APPROX. FLOOR AREA 164 SQ.FT. (15.2 SQ.M.)**

Whilst every attempt has been made to ensure the accuracy of the floor plan contained here, measurements of doors, windows, rooms and any other items are approximate and no responsibility is taken for any error, omission, or mis-statement. This plan is for illustrative purposes only and should be used as such by any prospective purchaser. The services, systems and appliances shown have not been tested and no guarantee as to their operability or efficiency can be given  
Made with Metropix ©2019



Agents Note: Whilst every care has been taken to prepare these sales particulars, they are for guidance purposes only. All measurements are approximate and for general guidance purposes only and whilst every care has been taken to ensure their accuracy, they should not be relied upon and potential buyers are advised to recheck the measurements

