

FLETCHERS

ESTATE AGENTS



Hardwicke Road, W4

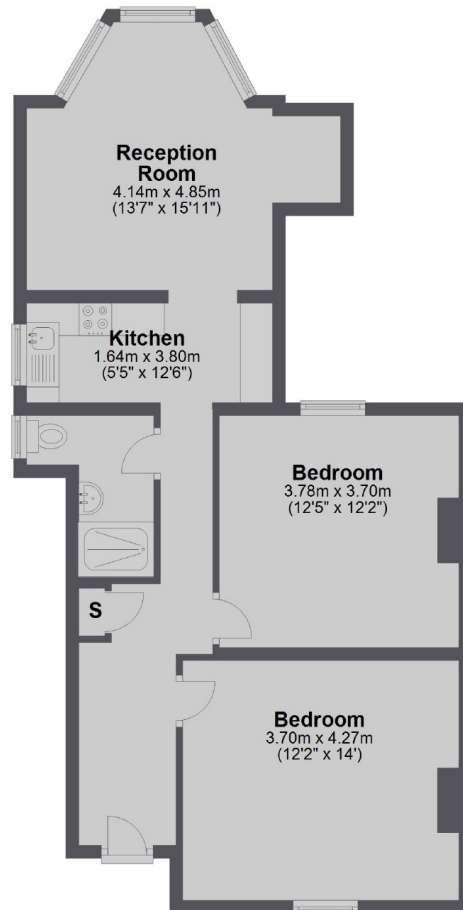
£520,000

A well presented two double bedroom property with its own entrance benefits from high ceilings, original fireplaces and lots of natural light. There is also a good sized reception room with bay window, fitted kitchen and shower room.

Hardwicke Road is a quiet residential road overlooking Acton Green Common and within 200 metres of Chiswick Park station, providing easy access in and out London via the A4.

- Raised Ground Floor • Two Double Bedrooms • Reception Room • Fitted Kitchen • Shower Room • Near Chiswick Park Station •

Raised Ground Floor



Total area: approx. 66.5 sq. metres (715.3 sq. feet)

Fletchers Chiswick Turnham Green
Sales
58 Turnham Green Terrace, London, W4
1QP
020 8987 3000

Energy Rating: E. We aim to make our particulars both accurate and reliable. However they are not guaranteed; nor do they form part of an offer or contract. If you require clarification on any points then please contact us, especially if you're traveling some distance to view. Please note that appliances and heating systems have not been tested and therefore no warranties can be given as to their good working order.