

FLETCHERS

ESTATE AGENTS



Stile Hall Gardens, W4

£1,649,950

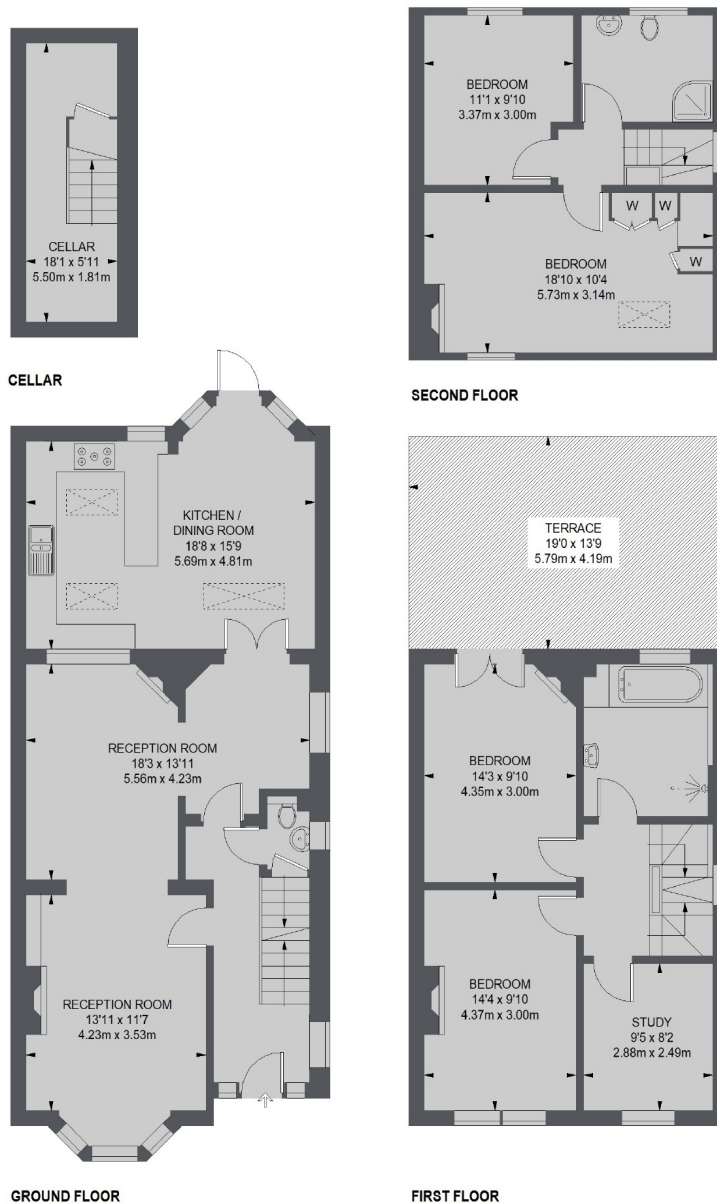
A beautifully presented five double bedroom semi-detached Victorian home with a large through reception, full-width kitchen/dining room extension and a 34" garden as well as a roof terrace.

Stile Hall Gardens is within 400 metres of Gunnersbury underground station and Kew Bridge Mainline Station and within a quarter of a mile of the River Thames. Easy access is provided in and out of London via the A4 and M4.

- Semi Detached • Five Double Bedrooms • Garden • Roof Terrace • Excellent School Catchment • No Onward Chain •

FLETCHERS

ESTATE AGENTS



TOTAL APPROX. FLOOR AREA (INCLUDING CELLAR)
1875 SQ. FT. (174.17 SQ. M.)

Fletchers Chiswick Turnham Green
Sales
58 Turnham Green Terrace, London, W4
1QP
020 8987 3000

Energy Rating: E. We aim to make our particulars both accurate and reliable. However they are not guaranteed; nor do they form part of an offer or contract. If you require clarification on any points then please contact us, especially if you're traveling some distance to view. Please note that appliances and heating systems have not been tested and therefore no warranties can be given as to their good working order.