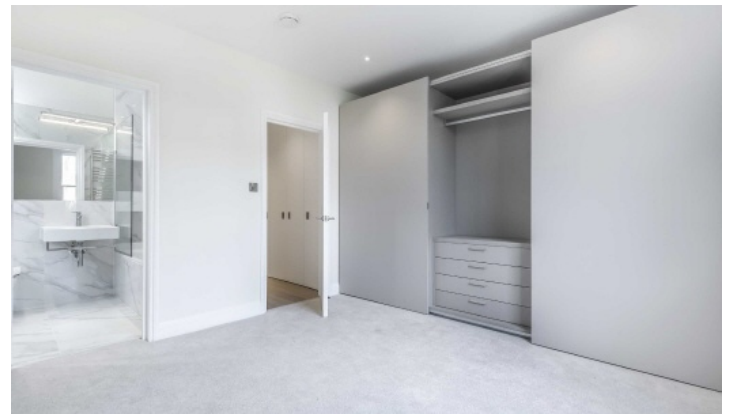


# FLETCHERS

ESTATE AGENTS



## Foster Road, W4

£735,000

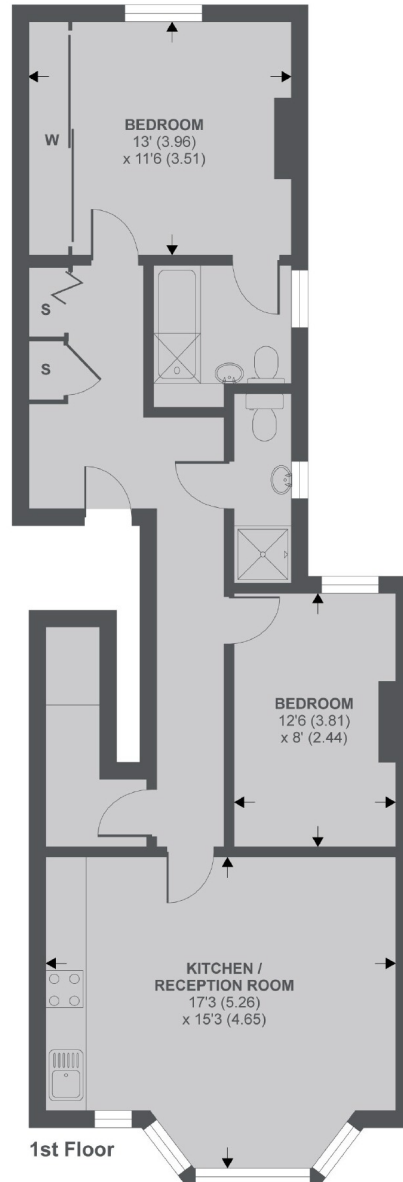
This first floor flat has been recently renovated to a superb standard. There are two bedrooms, one with an en suite, an open plan kitchen living room with a large bay window, plenty of storage throughout and sold with no onward chain.

Foster Road is ideally located just off Chiswick High Road and runs parallel to Dukes Avenue. There are excellent shops, cafes and restaurants within walking distance. Turnham Green Station is approximately 0.6 miles away and Chiswick Park Station is 0.5 miles away. There is also easy access in and out of London on the A4/M4.

- Newly Renovated • Two Bedrooms • Two Bath/Shower Rooms • No Onward Chain • High End Finish • Sought After Location •

# FLETCHERS

## ESTATE AGENTS



APPROX FLOOR AREA 774 SQ.FT 72 SQ.M  
Copyright nichecom.co.uk 2019 REF : 472750

Fletchers Chiswick Turnham Green  
Sales  
58 Turnham Green Terrace, London, W4  
1QP  
020 8987 3000

Energy Rating: C. We aim to make our particulars both accurate and reliable. However they are not guaranteed; nor do they form part of an offer or contract. If you require clarification on any points then please contact us, especially if you're traveling some distance to view. Please note that appliances and heating systems have not been tested and therefore no warranties can be given as to their good working order.