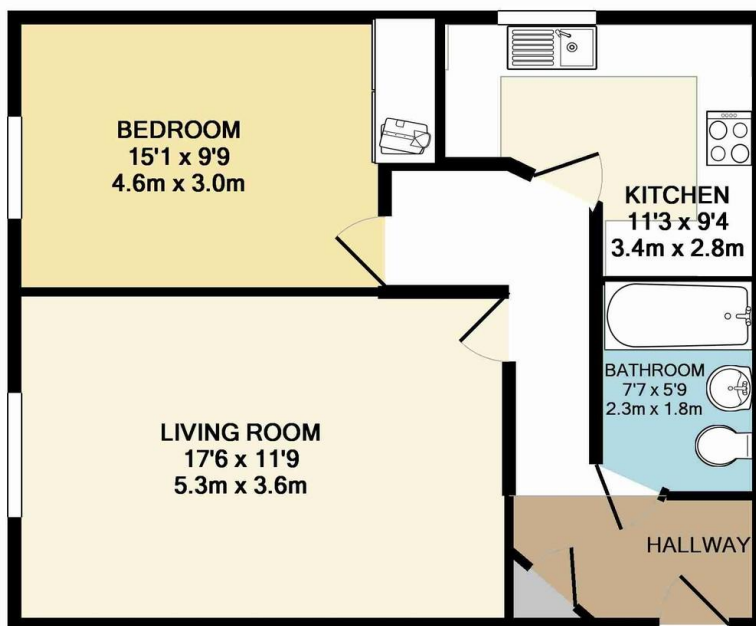




## Farnham Cloisters, 41 Shortheath Road, GU9 8SX    Rent: £895 pcm One Bedroom Executive Top Floor Apartment

Secure Entry System: Lift: Bright Sitting Room with Large Picture Window: Modern Beech Kitchen with integrated appliances including fridge/freezer, gas hob, electric oven, dishwasher and washing machine: Generous Sized Bedroom plus sizable storage; Bathroom with overbath shower: Allocated Parking for One Car: Communal Gardens: Communal Bike Store

Next Available: Mid September 2019



TOTAL APPROX. FLOOR AREA 47.5 SQ.M. (512 SQ.FT.)

Whilst every attempt has been made to ensure the accuracy of the floor plan contained here, measurements of doors, windows, rooms and any other items are approximate and no responsibility is taken for any error, omission, or mis-statement. This plan is for illustrative purposes only and should be used as such by any prospective purchaser. The services, systems and appliances shown have not been tested and no guarantee as to their operability or efficiency can be given  
Made with Metropix ©2009

#### Directions:

Leaving the centre of Farnham, proceed up Firgrove Hill to the traffic lights at the top of the hill. Turn right into Ridgway Road, continuing into Shortheath Road and Farnham Cloisters can be found on the left hand side.

Council Tax Band: D

#### Contact Details

5 Borelli Yard

Farnham

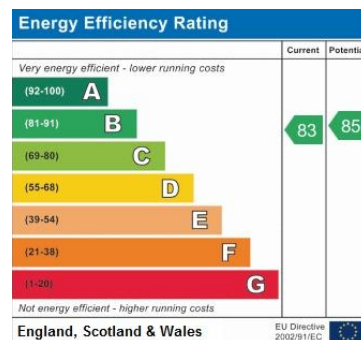
Surrey

GU9 7NU

[www.southernproperties.info](http://www.southernproperties.info)

[lettings@southernproperties.info](mailto:lettings@southernproperties.info)

01252 724438



Agents Note: Whilst every care has been taken to prepare these sales particulars, they are for guidance purposes only. All measurements are approximate and for general guidance purposes only and whilst every care has been taken to ensure their accuracy, they should not be relied upon and potential buyers are advised to recheck the measurements.