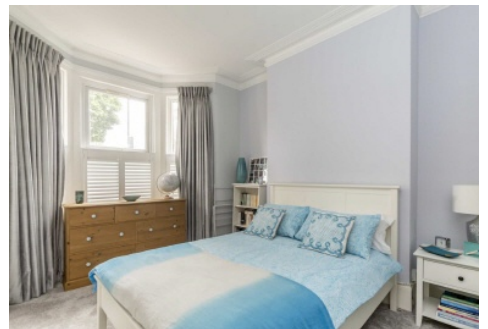


SNELLERS

ESTATE AGENTS



Waldegrave Road, TW11

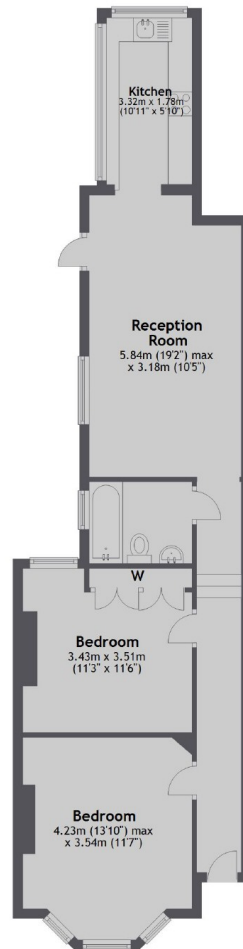
£459,950

A beautifully presented two double bedroom converted flat occupying the ground floor of this pretty Victorian house. This flat has the advantage of a private patio garden.

The apartment is situated on Waldegrave Road, less than half a mile to Teddington mainline station. The superb shops, restaurants and bars of Teddington High Street are equally close to hand.

- Two Bedrooms • Large Reception Room • Private Patio Garden •
- Superb Location • Close To Station • Modern Kitchen & Bathroom •

Ground Floor



Total area: approx. 63.6 sq. metres (684.1 sq. feet)

Snellers Teddington Sales
74 Broad Street
Teddington
TW11 8QX
020 8408 8040
teddingtonsales@snellers.co.uk

Energy Rating: E We aim to make our particulars both accurate and reliable. However they are not guaranteed; nor do they form part of an offer or contract. If you require clarification on any points then please contact us, especially if you're traveling some distance to view. Please note that appliances and heating systems have not been tested and therefore no warranties can be given as to their good working order