



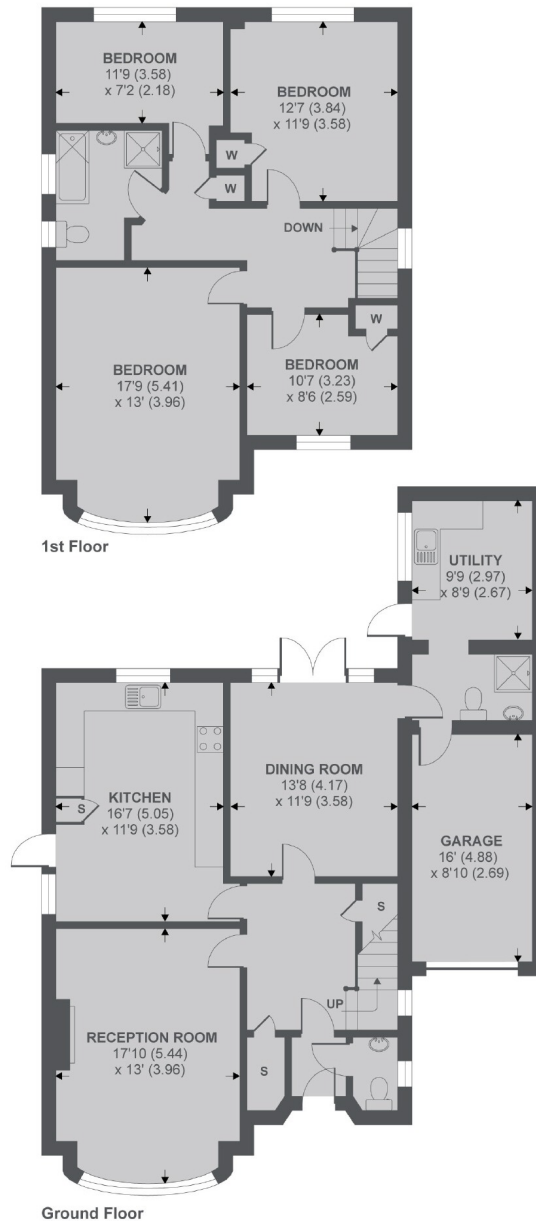
## Corringway, W5

£623 pw (£2700 pcm)

A four bedroom detached house with two spacious reception rooms, eat-in kitchen and large modern family bathroom.

Corringway is less than a quarter of a mile from Park Royal station and excellent road links to the A4/M4 and A40.

- Detached House • Four Bedrooms • Garage •
- Rear Garden • Two Reception Rooms • Spacious Kitchen •



APPROX FLOOR AREA 1687 SQ.FT 156.7 SQ.M  
 GARAGE APPROX FLOOR AREA 138 SQ.FT 12.8 SQ.M  
 TOTAL APPROX FLOOR AREA 1825 SQ.FT 169.5 SQ.M  
 Copyright nichecom.co.uk 2019 REF : 527302

Robertson Smith & Kempson Ealing Lettings  
 1 The Broadway, London, W5  
 2NT  
 020 8840 7885  
[ealinglettings@robertsonsmithandkempson.co.uk](mailto:ealinglettings@robertsonsmithandkempson.co.uk)

Energy Rating: D. We aim to make our particulars both accurate and reliable. However they are not guaranteed; nor do they form part of an offer or contract. If you require clarification on any points then please contact us, especially if you're traveling some distance to view. Please note that appliances and heating systems have not been tested and therefore no warranties can be given as to their good working order.