

Dunstable Office:

01582 477 077



HOUSEHOLD
estate agents

Residential Sales • Property Management • Lettings



36 Somersby Close, Luton, Beds, LU1 3XB

£695 Per Month



36 Somersby Close, Luton, Beds, LU1 3XB

* HOUSEHOLD LETTING AGENTS * we are delighted to offer for rent this MUCH IMPROVED one bedroom cluster home that is available from September on a UN-FURNISHED basis. Somersby Close is located in the ever popular South Luton area and within a few minutes walk to the town centre and all of its amenities. This modern property consists of entrance porch, lounge, KITCHEN WITH WHITE GOODS, DOUBLE BEDROOM and a RE-FITTED BATHROOM. Further benefits include gas central heating, double glazing and allocated parking. To fully appreciate the fantastic benefits on offer we urge you to contact your local HOUSEHOLD LETTING AGENTS office without further delay to arrange an appointment to view.



Living Room

12'8" x 9'11" (3.86 x 3.02)

Fitted Kitchen

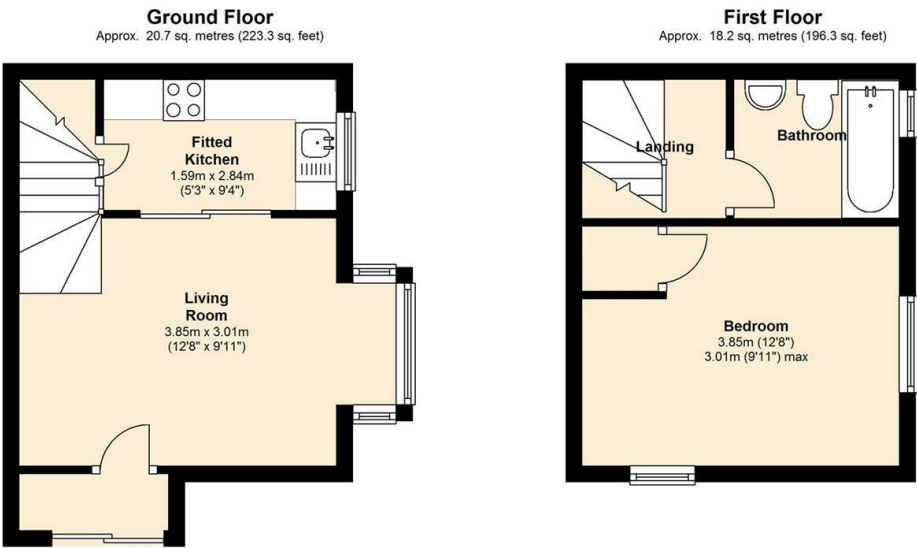
9'4" x 5'3" (2.84 x 1.60)

Bedroom

12'8" x 9'11" max (3.86 x 3.02 max)

Bathroom

Floor Plan



Total area: approx. 39.0 sq. metres (419.6 sq. feet)

Viewing

Please contact our Dunstable - Sales Office on 01582 477 077 if you wish to arrange a viewing appointment for this property or require further information.

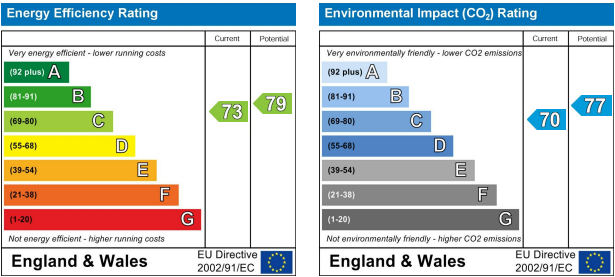
address: 15b High Street North
Dunstable, Beds LU6 1HX
telephone: 01582 477 077
email: dunstable@house-hold.co.uk
website: www.house-hold.co.uk

Additional Office: **Toddington:** 2-4 High Street
- 01525 877 771

Area Map



EPC



The Property Experts with the Personal Touch

MISDESCRIPTIONS ACT: Household Estate Agents Ltd. For themselves and for the vendors of this property, whose agents they are, give notice that the particulars are set out as a general outline only for the guidance of intending purchasers and do not constitute or constitute part of any offer of contract, All descriptions, dimensions references to the condition and necessary permissions for use and occupation and other details are given without responsibility, and the intending purchasers should not rely upon them as statements or representations of fact but must satisfy themselves by inspection or otherwise as to their correctness. No person in the employment of Household Estate Agents Limited has any authority to give or make any representation or warranty whatsoever in relation to this property.