



Hillside, Quarry Hill
Box, SN13 8LP



Hillside, Quarry Hill Box, SN13 8LP

It is hard to put into words the **SIMPLY STUNNING VIEWS** that greet you from the 7 metre Bi-folding doors and patio of this 3 bedroom **DETACHED** cottage, located on the historic Quarry Hill in Box.

- SIMPLY STUNNING VIEWS
- Detached Miners Cottage
- Contemporary And Period Charm
- Bespoke Kitchen With AGA Cooker
- Three Double Bedrooms
- Three Receptions Rooms
- Beautiful Gardens
- Gas Central Heating

Guide Price £675,000



Description

It is hard to put into words the **SIMPLY STUNNING VIEWS** that greet you from the 7 metre Bi-folding doors and patio of this 3 bedroom **DETACHED** cottage, located on the historic Quarry Hill in Box. Situated mid way up the hill the former miners cottage has views from all rear rooms towards Bath and Box valley, an area of **OUTSTANDING NATURAL BEAUTY**. The cottage itself has already been extended and provides a mixture of period charm and contemporary living. The ground floor has an external porch which leads directly to the living room with fireplaces either end, one of which has a log burner and a study room off, a door to the side hallway and cloakroom and further doors to the large and fantastic open plan family lounge and kitchen diner which has a painted oak bespoke Neptune kitchen and limestone flooring extending to the family lounge. There is also a central island unit and built in appliances which includes a gas fired AGA, dish washer, wine fridge, fridge freezer and additional kitchen with a useful utility room off. The views from the family lounge in particular are note worthy especially when the bi folds are folded back giving a real sense of being in the field itself. To the first floor there is a landing and three bedrooms, all of which have built in wardrobes and the master with en suite facilities and a family bathroom. Externally there are gardens mainly to the front which extend to the side and are mainly laid to a pretty patio and lawn on two levels leading to the front gate. Extending to the rear the garden is laid entirely to patio with access to the dining room and kitchen through the bi folds to the dining room and french doors to the kitchen. Once again from here, the views are stunning and the property is directly onto the field.



Situation

Box is a popular Wiltshire village offering an excellent range of local facilities which includes a post office, village hall, general stores, newsagent, butchers, chemist, library, doctors surgery, public houses, church local primary school and a large recreation ground in the centre of the village. The Georgian City of Bath (circa 6 miles) offers a more comprehensive range of facilities. There are mainline railway links to London, Bristol and Swindon from both Bath and Chippenham.

Property Information

Council Tax Band: - F

Mains Services

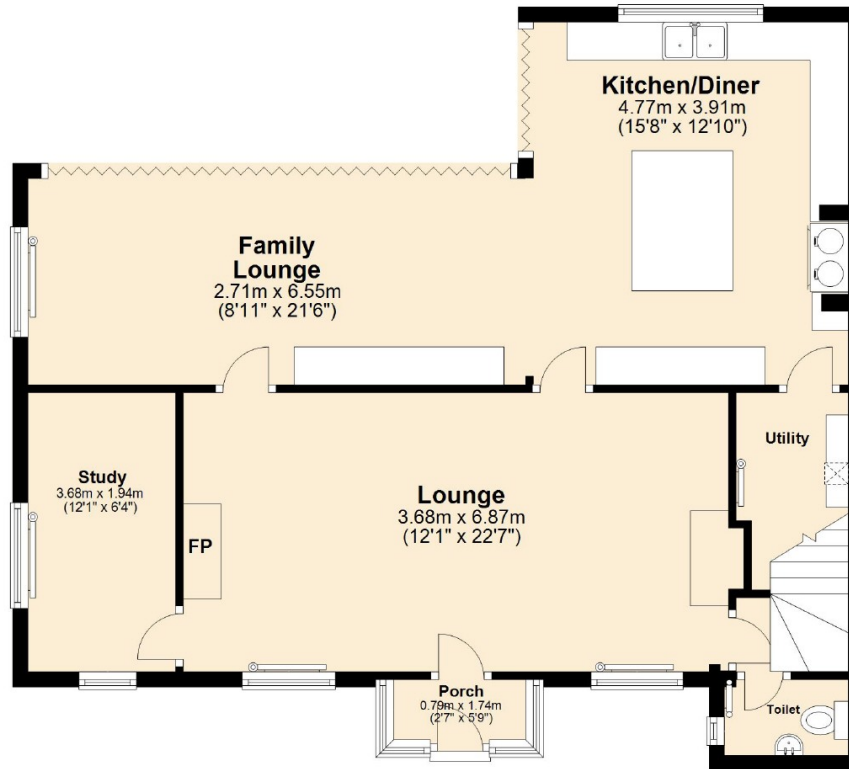


These particulars, whilst believed to be accurate are set out as a general outline only for guidance and do not constitute any part of an offer or contract. Intending purchasers should not rely on them as statements of representations of fact, but must satisfy themselves by inspection or otherwise as to their accuracy. No person in this firm's employment has the authority to make or give any representation or warranty in respect of the property. All measurements and distances are approximate only.



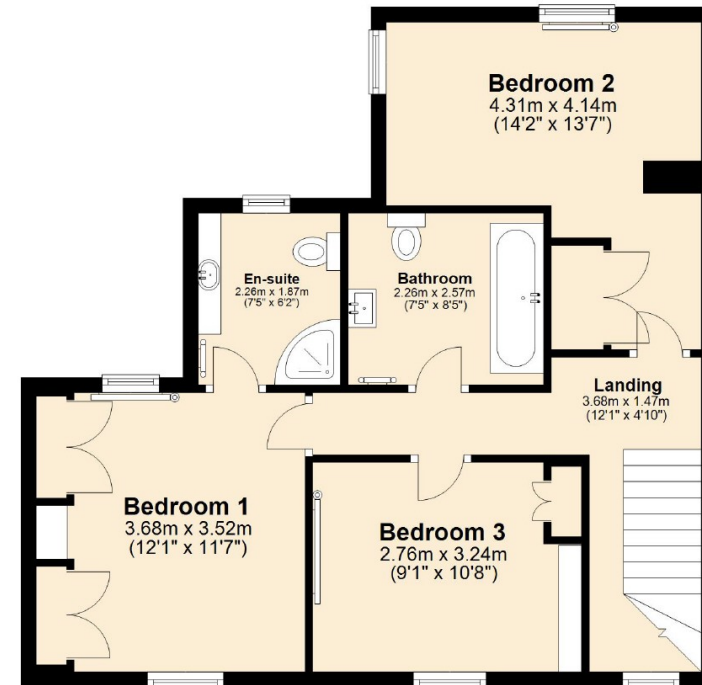
Ground Floor

Approx. 80.2 sq. metres (863.3 sq. feet)



First Floor

Approx. 57.3 sq. metres (616.7 sq. feet)



Total area: approx. 137.5 sq. metres (1480.0 sq. feet)

6 High Street, Corsham, Wiltshire, SN13 0HB
Tel: 01249 712039
Fax:
Email: corsham@strakers.co.uk

www.strakers.co.uk

■ Chippenham
■ Corsham

■ New Homes
■ Malmesbury

■ Swindon
■ Devizes

■ Auction
■ Lettings