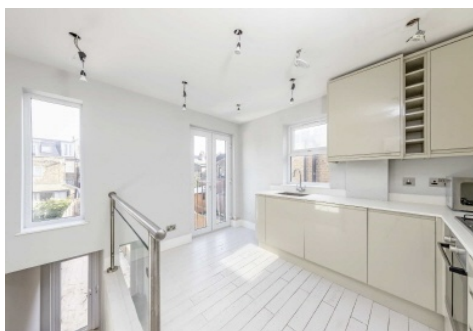


Chard

— Lettings —



Hamble Street, SW6

£630 pw (£2,730 pcm)

This three double bedroom first floor flat in Fulham is close to many local amenities, cafés and restaurants. The flat has a spacious reception room with high ceilings, a modern integrated kitchen with access to a private garden, two tiled bathrooms and good storage space throughout.

Hamble Street is located off Townmead Road and Wandsworth Bridge Road where there are many bus routes leading into the city and Battersea. Imperial Wharf overground station is nearby with a wide range of local amenities and restaurants.

- Three Bedrooms • Modern Kitchen • Spacious Reception •

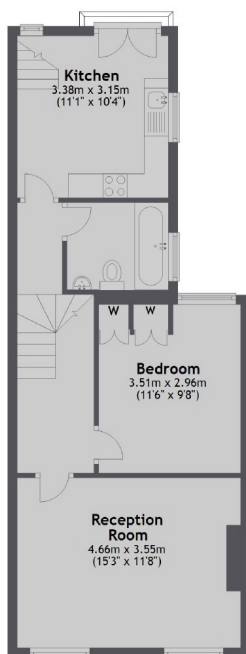
Chard

Lettings

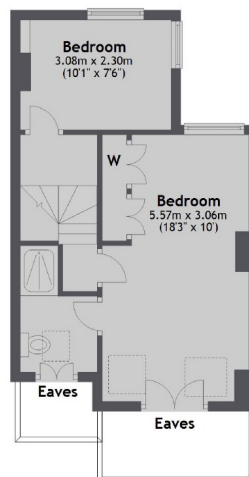
Ground Floor



First Floor



Second Floor



Total area: approx. 88.2 sq. metres (949.0 sq. feet)

Chard Fulham
5 Harwood Road,
London, SW6 4QP
020 7384 1400
fulhamlettings@chard.co.uk

Energy Rating: D. We aim to make our particulars both accurate and reliable. However they are not guaranteed; nor do they form part of an offer or contract. If you require clarification on any points then please contact us, especially if you're traveling some distance to view. Please note that appliances and heating systems have not been tested and therefore no warranties can be given as to their good working order.