



Castlebar Park, W5

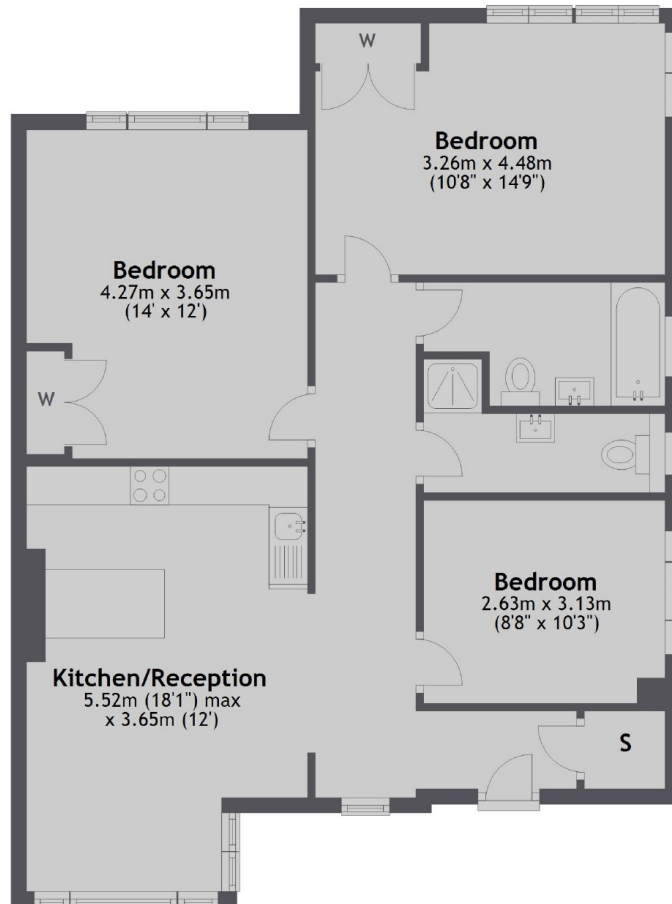
£519 pw (£2250 pcm)

This newly refurbished three bedroom flat is in a purpose-built building on a popular residential street. The kitchen has been stylishly designed with fitted appliances and breakfast bar built in.

The flat is just over three quarters of a mile from Ealing Broadway station (Crossrail, Central and District lines). There is also a wide range of schooling options nearby.

- Newly Refurbished • Three Bedrooms • Two Bathrooms •
- Open-Plan Layout • Fitted Kitchen • Breakfast Bar •

Second Floor



Total area: approx. 80.7 sq. metres (868.3 sq. feet)

Robertson Smith & Kempson Ealing Lettings
1 The Broadway, London, W5
2NT
020 8840 7885
ealinglettings@robertsonsmithandkempson.co.uk

Energy Rating: D. We aim to make our particulars both accurate and reliable. However they are not guaranteed; nor do they form part of an offer or contract. If you require clarification on any points then please contact us, especially if you're traveling some distance to view. Please note that appliances and heating systems have not been tested and therefore no warranties can be given as to their good working order.