



Atheldene Road, SW18

£1,100,000

A stunning example of a five bedroom Victorian family home, that has been thoughtfully renovated to an excellent standard, in a prime location.

- Five Bedrooms
- Two Bathrooms
- Victorian Family Home
- Mid Terrace
- Excellent Condition
- Sought After Location

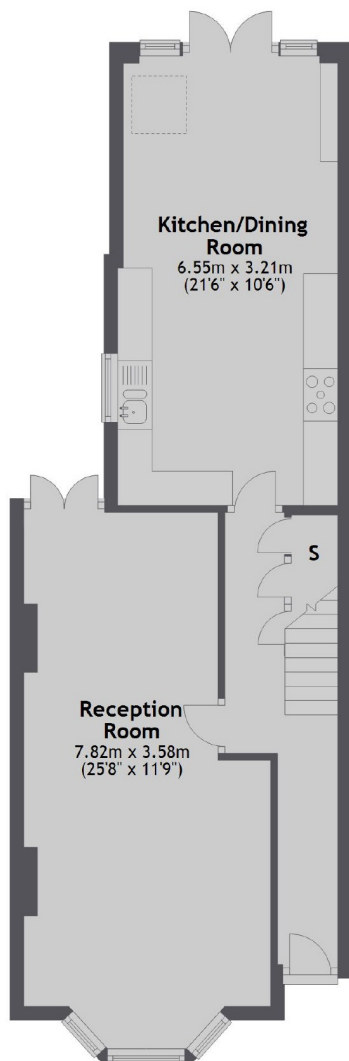
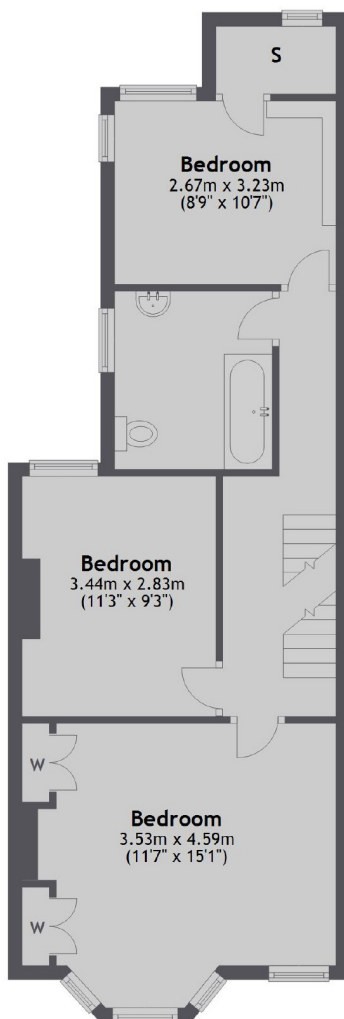
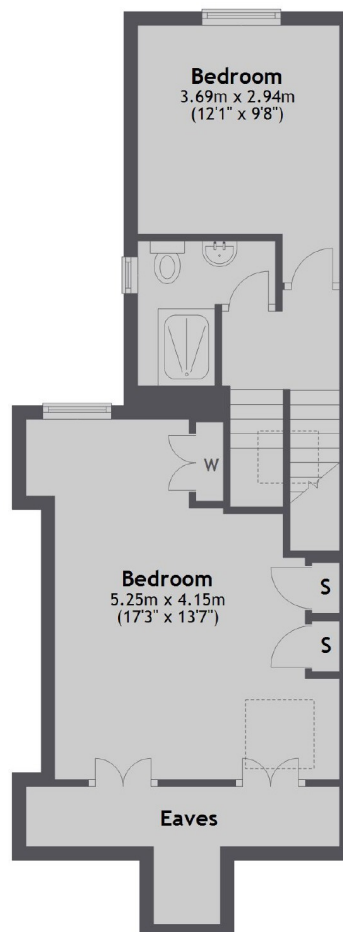


The property is mid terrace and has been fully extended into the loft to create a generous living space, with scope to further extend into the side return. Accommodation comprises; entrance hall with useful storage cupboards, spacious and well presented double reception room, kitchen dining room offering an excellent entertaining space; double doors lead out to a low maintenance garden. On the first floor there is a modern family bathroom and three well proportioned bedrooms and stairs leading to the second floor with spacious master bedroom, second bathroom and another double bedroom.

Located on a much sought after road in Earlsfield, the property is well placed for some of the most desirable schools in the area and is 0.4 miles from Earlsfield mainline station. Garratt Lane with its vast array of shops, bars and restaurants is within easy reach. The green open spaces of Wandsworth Common and local parks are also close by.





Ground Floor

First Floor

Second Floor


Main area: Approx. 145.2 sq. metres (1563.1 sq. feet)
Plus eaves, approx. 5.3 sq. metres (57.4 sq. feet)

Jacksons Earlsfield
372-374 Garratt Lane
Earlsfield
London
SW18 4ES
020 8971 7979

Energy Rating: D We aim to make our particulars both accurate and reliable. However they are not guaranteed; nor do they form part of an offer or contract. If you require clarification on any points then please contact us, especially if you're traveling some distance to view. Please note that appliances and heating systems have not been tested and therefore no warranties can be given as to their good working order.