



## Tanner Street, SE1

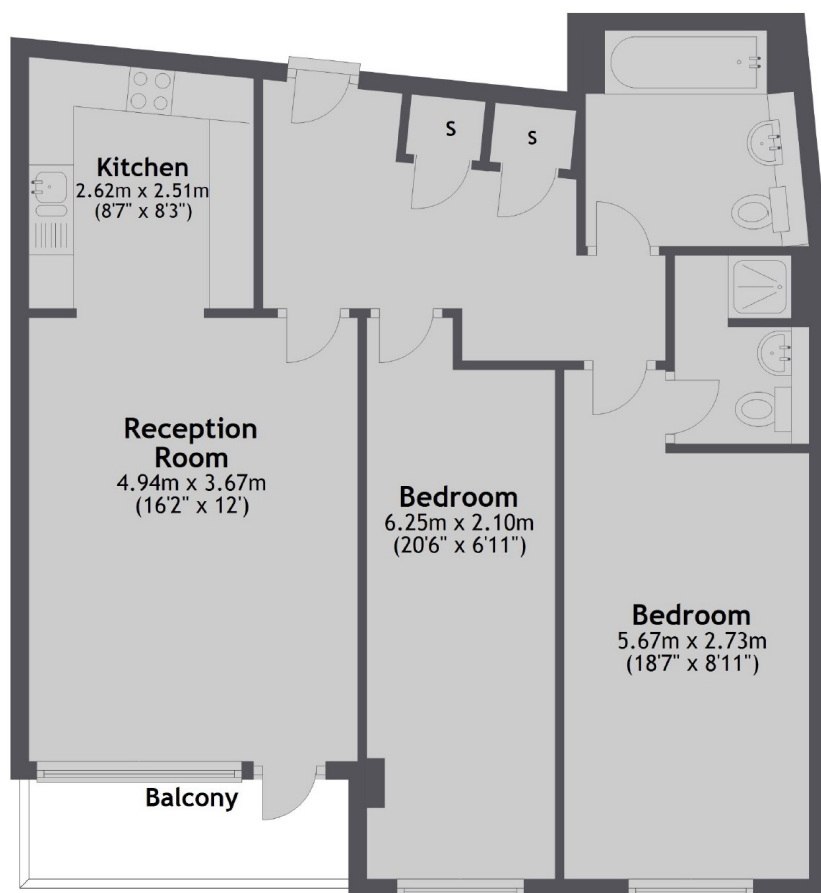
£599,999

This two double bedroom flat boasts a large open plan kitchen living space, two bathrooms, private balcony and ample storage.

Tanner Street is 0.6 miles from Bermondsey station and 0.7 miles from London Bridge station.

- Two Double Bedrooms • Two Bathrooms • Private Balcony • Fantastic Location • Excellent Condition • Modern

## Fourth Floor



Total area: approx. 73.2 sq. metres (787.7 sq. feet)

City Docklands  
205 Tooley Street  
London, SE1 2JX  
020 7234 0880  
[welcome@citydocklands.com](mailto:welcome@citydocklands.com)

Energy Rating: B. We aim to make our particulars both accurate and reliable. However they are not guaranteed; nor do they form part of an offer or contract. If you require clarification on any points then please contact us, especially if you're traveling some distance to view. Please note that appliances and heating systems have not been tested and therefore no warranties can be given as to their good working order.