



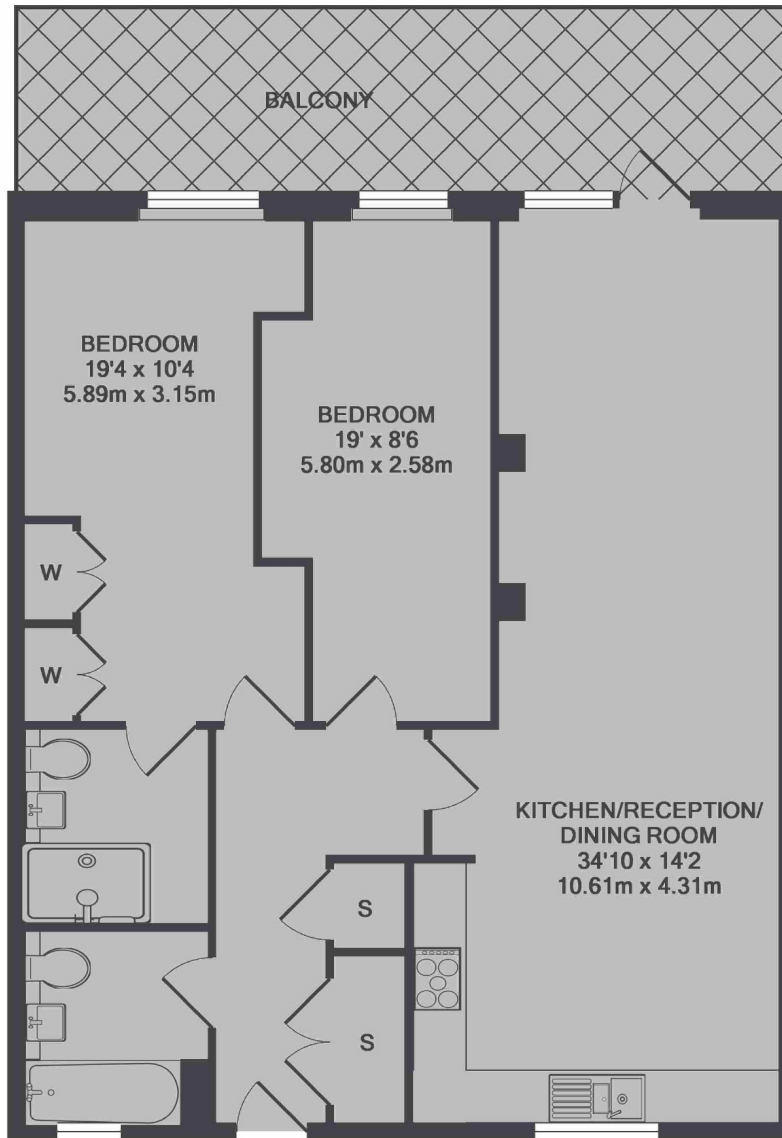
Uxbridge Road, W13

£576 pw (£2495 pcm)

A penthouse apartment offering panoramic views across London and luxurious living space throughout.

Lovelace House is ideal for access to West Ealing station, Ealing Broadway station and the bustling town centre.

- Purpose Built • Penthouse • Two Bedrooms •
- Two Bathrooms • Underground Parking • Private Terrace •



TOTAL APPROX. FLOOR AREA 992 SQ.FT. (92.2 SQ.M.)

Robertson Smith & Kempson Ealing Lettings
1 The Broadway, London, W5
2NT
020 8840 7885
ealinglettings@robertsonsmithandkempson.co.uk

Energy Rating: B. We aim to make our particulars both accurate and reliable. However they are not guaranteed; nor do they form part of an offer or contract. If you require clarification on any points then please contact us, especially if you're traveling some distance to view. Please note that appliances and heating systems have not been tested and therefore no warranties can be given as to their good working order.