

8 Bramlands Close | London, SW11



£438 Per Week

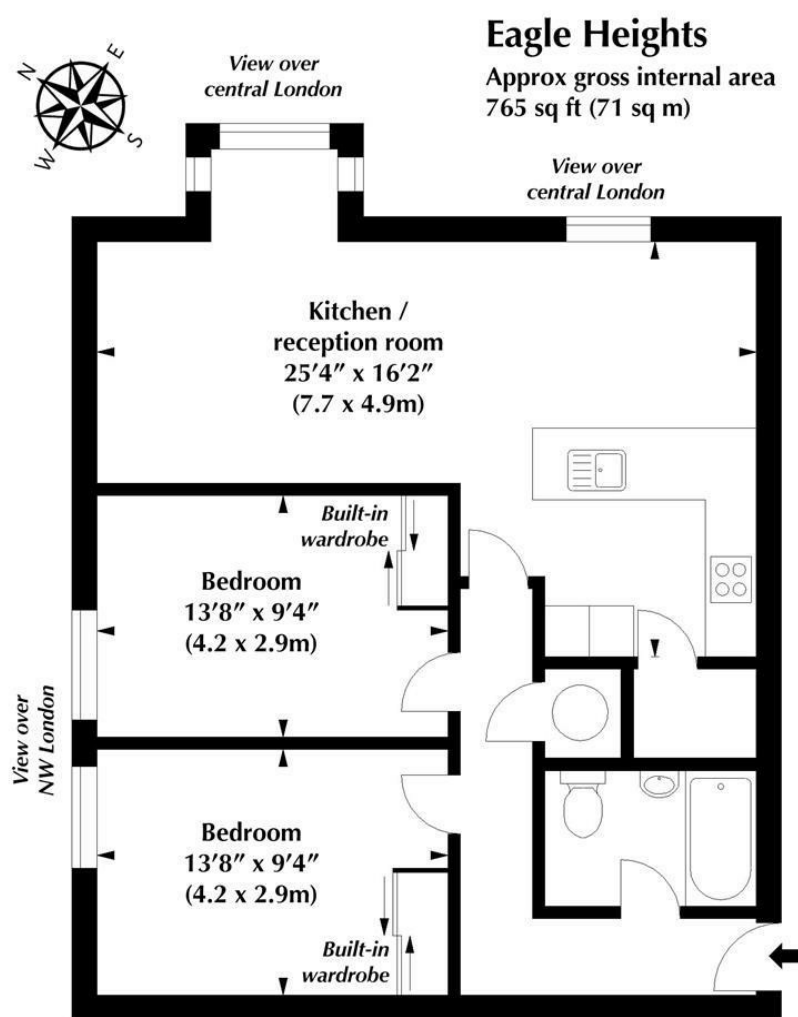
• Stunning 17th Floor Views • On-site Gym and Pool facilities • Two Double Bedroom Flat • Open Plan Reception and Eat-In Kitchen • Concierge Service • Short Walk to Clapham Junction • Excellent Transport Links • Off Street Parking Space Available by Separate Negotiation

8 Bramlands Close | London, SW11



Probably the best sub-£2,000 a month 2-bed flat in London with amazing panoramic views of the city as the flat is situated on the 17th floor!

The property consists of a spacious open plan reception room with modern eat-in kitchen and ample dining space, two good sized double bedrooms with fitted storage and large family bathroom. Further benefits include free use of the on-site gym, sauna, swimming pool, jacuzzi and concierge, as well as a designated off-street car parking space (by separate negotiation). Leasehold covenants may apply. The flat is situated within a popular private development just minutes walk from Clapham Junction Station for links across the city and country, and ideally placed for a range of shops, bars and restaurants along St Johns Hill and Northcote Road. Wandsworth Common is within a few minutes walk Available immediately, part furnished.



Energy Efficiency Rating		
	Current	Potential
Very energy efficient - lower running costs		
(92 plus) A		
(81-91) B		
(69-80) C		
(55-68) D		
(39-54) E		
(21-38) F		
(1-20) G		
Not energy efficient - higher running costs		
England & Wales	EU Directive 2002/91/EC	
Environmental Impact (CO ₂) Rating		
	Current	Potential
Very environmentally friendly - lower CO ₂ emissions		
(92 plus) A		
(81-91) B		
(69-80) C		
(55-68) D		
(39-54) E		
(21-38) F		
(1-20) G		
Not environmentally friendly - higher CO ₂ emissions		
England & Wales	EU Directive 2002/91/EC	

These particulars are designed to provide a guideline only and cannot be relied upon as a statement of fact. The description represents the opinion of the author and is not intended to provide false or misleading information. Any prospective purchaser should make further checks on its accuracy. All measurements are approximate and floorplans are for representation only.



Eden Harper
64 Battersea Park Road, London, SW11 4JP
0207 720 1116
info@edenharper.com
www.edenharper.com