



Tennison Avenue, Borehamwood WD6

MORRIS & JOEL

As Sole Agents we are delighted to be able offer for Sale this well maintained Two Double Bedroom Semi-Detached Bungalow, with potential to extend.



A: 48 Shenley Road
Borehamwood
Hertfordshire, WD6 1DS

T: 020 3621 8080

E: enquiries@morrisandjoel.com

W: www.morrisandjoel.com

Delightful Semi-Detached Bungalow | Potential To Extend | Two Double Bedrooms

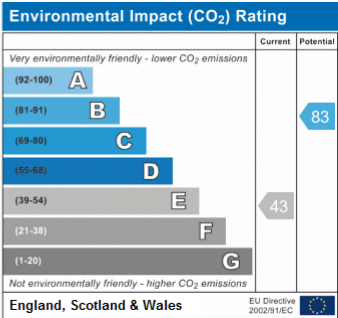
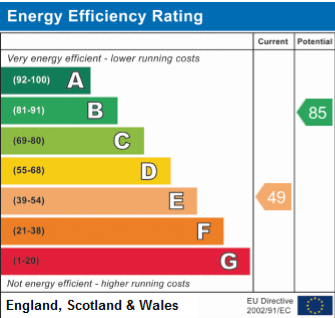
Fitted Kitchen/Breakfast Room | Living Room | Utility Room

Shower Room/WC | Stunning South Facing Rear Garden | Beautiful Front Garden | Off Street Parking for at least 2 Cars

£499,950 Freehold

DESCRIPTION

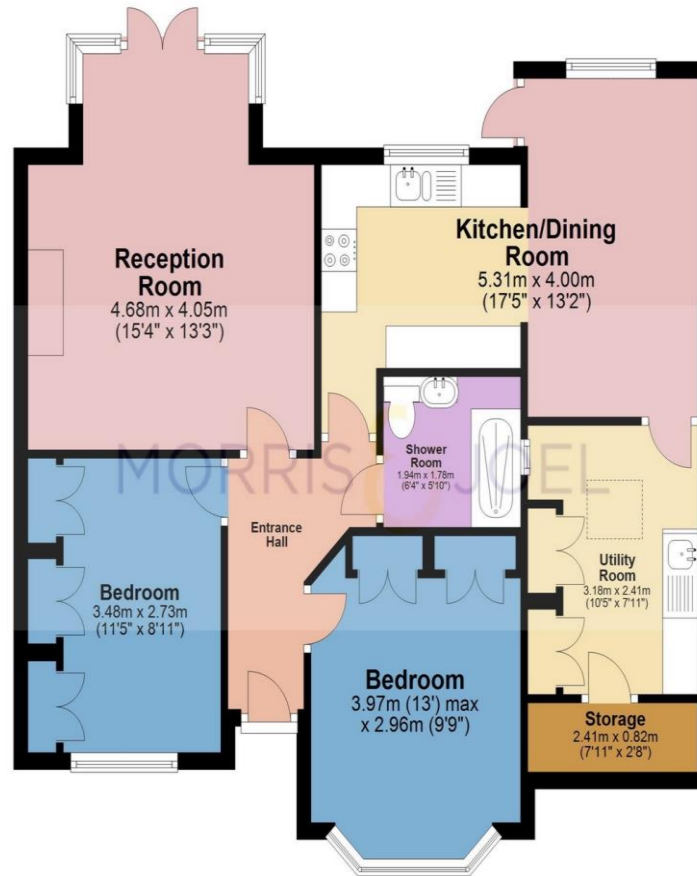
As Sole Agents we are delighted to be able offer for Sale this well maintained Two Double Bedroom Semi-Detached Bungalow, with potential to extend. This lovely home offers a fitted kitchen/breakfast room, living room, large utility room with plenty of storage space, shower room/wc, wood strip flooring. There is a stunning large south facing rear garden with a good sized patio and to the front is a beautifully kept front garden. There is also off stret parking for at least 2 cars. Tennison Avenue is conveniently located for local schools including Yavneh and is within walking distance to Borehamwood High Street with its array of local shops and restaurant, The Boulevard Shopping centre and Borehawmood and Elstree Thameslink Station. Viewing is Highly Recommended.





Ground Floor

Approx. 74.0 sq. metres (796.5 sq. feet)



Total area: approx. 74.0 sq. metres (796.5 sq. feet)

While we do not doubt the floor plans accuracy, we make no guarantee, warranty or representation as to the accuracy and completeness of the floor plan. You or your advisors should conduct a careful, independent investigation of the property to determine to your satisfaction as to the suitability of the property for your space requirements. Plan produced using PlanUp.

Plan produced using PlanUp.

FOR CLARIFICATION

We wish to inform prospective purchasers that we have prepared these sales particulars as a general guide. We have not carried out a detailed survey, nor tested the services, appliances and specific fittings. Room sizes are approximate and rounded: they are taken between internal wall surfaces and therefore included cupboards/shelves, etc. Accordingly, they should not be relied upon for carpets and furnishings. Formal notice is also given that all fixtures and fittings, carpeting, curtains/blinds and kitchen equipment, whether fitted or not, are deemed removable by the vendor unless specifically itemised within these particulars.

MORRIS & JOEL