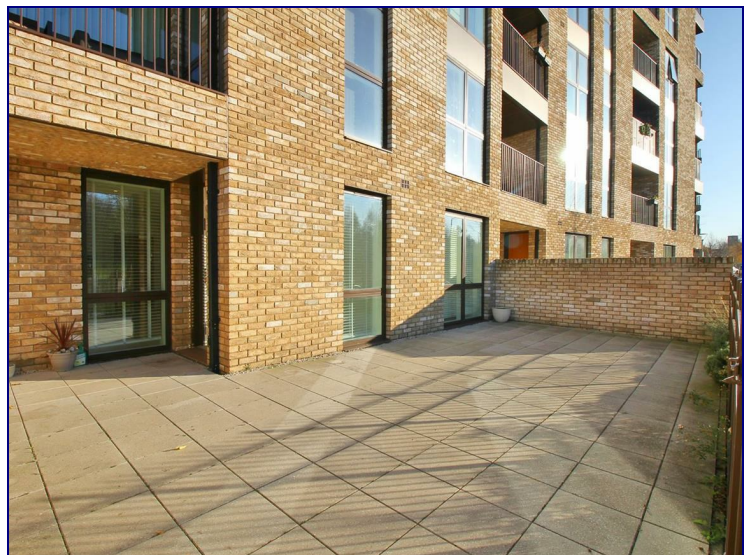




www.kings-group.net

488 Bethnal Green Road
London E2 0EA
Tel: 0207 613 2121

4 Lakeside Drive Park Royal, London, NW10 7GD



£1,450 Per Month

+++ZERO DEPOSIT OPTION AVAILABLE+++

1 Bedroom 1 bathroom apartment situated at the Royal Waterside development. This luxury development is situated in West London's newest village, in close proximity to Park Royal station.

The development benefits from beautiful lakes and blissful greenery. The apartment features a balcony, underground parking facilities and the very best in modern fixtures and fittings.

Brilliant transport links in to central London are a short distance away, 7 minutes walk to Park Royal station for the Piccadilly Line and 14 minutes walk to Hanger Lane for the Central Line.



