

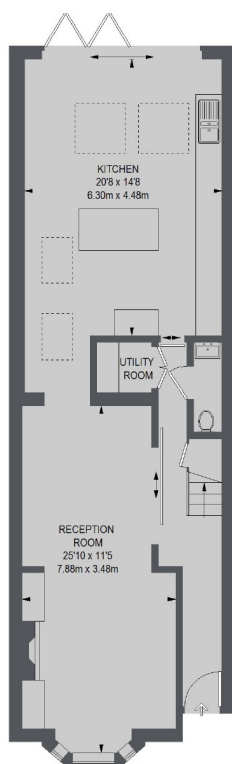


**Harberson Road, SW12**

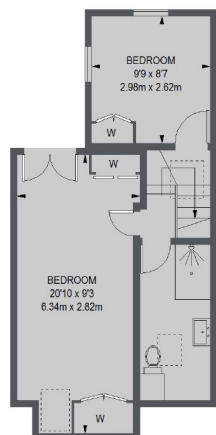
**£5,500**

- Mid-Terraced House
- Bright Reception Room
- Kitchen/Breakfast Room
- Five Bedrooms
- Two Family Bathrooms
- Close To Balham Station

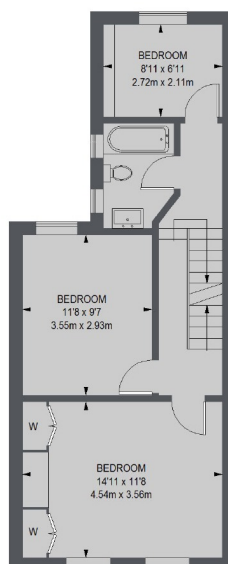
For further information on the costs associated with renting a property, please pop into our office or visit our website.



GROUND FLOOR



SECOND FLOOR



FIRST FLOOR

TOTAL APPROX. FLOOR AREA 1628 SQ. FT. (151.22 SQ. M.)

Jacksons Balham  
8-11 Balham Station Road  
London  
SW12 9SG  
020 8675 6565  
[balham.lettings@jacksonsestateagents.com](mailto:balham.lettings@jacksonsestateagents.com)

Energy Rating: We aim to make our particulars both accurate and reliable. However they are not guaranteed; nor do they form part of an offer or contract. If you require clarification on any points then please contact us, especially if you're traveling some distance to view. Please note that appliances and heating systems have not been tested and therefore no warranties can be given as to their good working order.