



## **Bramley Road, W5**

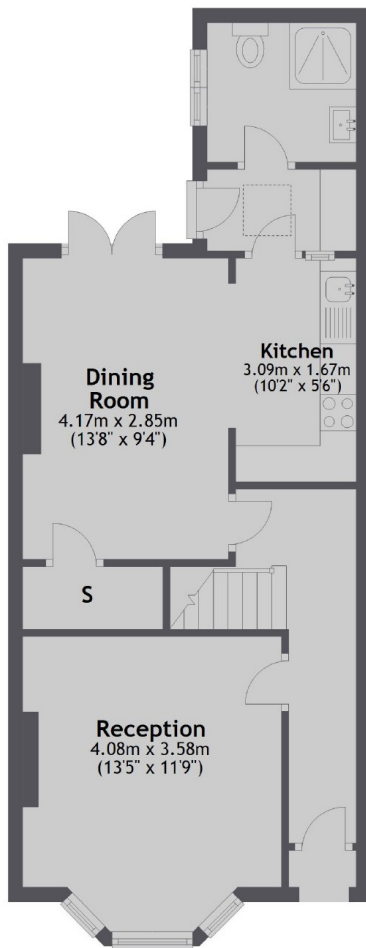
**£530 pw (£2,300 pcm)**

This spacious property has a reception room the the front, there is a open plan kitchen and living space leading to a utility and shower room. On the first floor are three bedrooms and a bathroom and the loft has been converted to create a master and a walk in wardrobe.

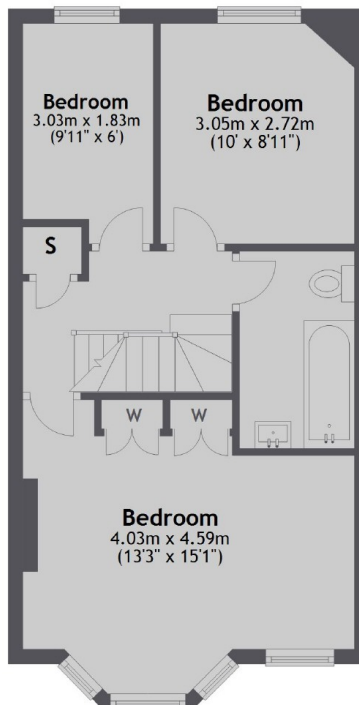
Bramley road is a residential tree lined street close by to Northfields tube station and also convenient for Lammas and Blondin Park.

- Four Bedrooms • Two Bathrooms • Two Receptions •
- South Facing Garden • Northfileds Tube Station • Period Property •

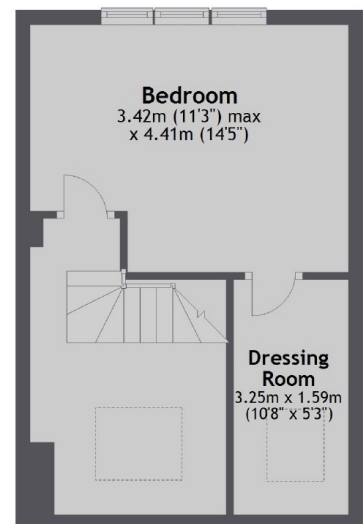
Ground Floor



First Floor



Second Floor



Total area: approx. 118.6 sq. metres (1276.2 sq. feet)

Robertson Smith & Kempson Northfields Lettings  
116 Northfield Avenue, London,  
W13 9RT  
020 8280 2800  
[northfieldslettings@robertsonsmithandkempson.co.uk](mailto:northfieldslettings@robertsonsmithandkempson.co.uk)

Energy Rating: D. We aim to make our particulars both accurate and reliable. However they are not guaranteed; nor do they form part of an offer or contract. If you require clarification on any points then please contact us, especially if you're traveling some distance to view. Please note that appliances and heating systems have not been tested and therefore no warranties can be given as to their good working order.