



147 Lansdowne Crescent
Derry Hill, SN11 9QN



147 Lansdowne Crescent, Derry Hill, SN11 9QN

Set close to the centre of this popular village, this detached family home is immaculately presented throughout and offers modern living.

- Popular Village Location
- Immaculate Family Home
- Open Plan Kitchen/Dining Room
- Two Reception Rooms
- Four Bedroom Detached House
- Bathroom and En-Suite
- Enclosed Rear Garden
- Detached Double Garage
- Viewing Highly Recommended

Guide Price £450,000



Description

Set close to the centre of this popular village, this detached family home is immaculately presented and offers modern living throughout. The accommodation comprises a large entrance hall, an open plan contemporary Kitchen/Dining room with granite worktops, a sitting room with double doors opening to the rear garden and a study. A cloakroom completes the ground floor. Four bedrooms, the master of which has an en-suite shower room, and the family bathroom are to the first floor. Externally there is a well maintained garden to the front with an off road driveway to the side which leads to the double garage. To the rear of the property is a fully enclosed garden laid mainly to lawn with a patio area offering ample space for seating. Further benefits include solar panels, gas fired central heating and UPVC double glazed windows.

Situation

The property is situated within a cul-de-sac in the very popular village of Derry Hill. The village has a primary school, post office/ shop, church and public house. Bowood House and Gardens, and Bowood Golf Club are situated nearby and a more comprehensive range of amenities are available in nearby Chippenham to include mainline railway station (London-Paddington) and the M4 motorway at Junction 17 offers excellent motor commuting to the major centres of Bath, Bristol, Swindon and London.

Property Information

Council Tax Band: F

Freehold

Mains Services

Gas Fired Central Heating

EPC Rating; C



These particulars, whilst believed to be accurate are set out as a general outline only for guidance and do not constitute any part of an offer or contract. Intending purchasers should not rely on them as statements of representations of fact, but must satisfy themselves by inspection or otherwise as to their accuracy. No person in this firm's employment has the authority to make or give any representation or warranty in respect of the property. All measurements and distances are approximate only.



Floor Plan

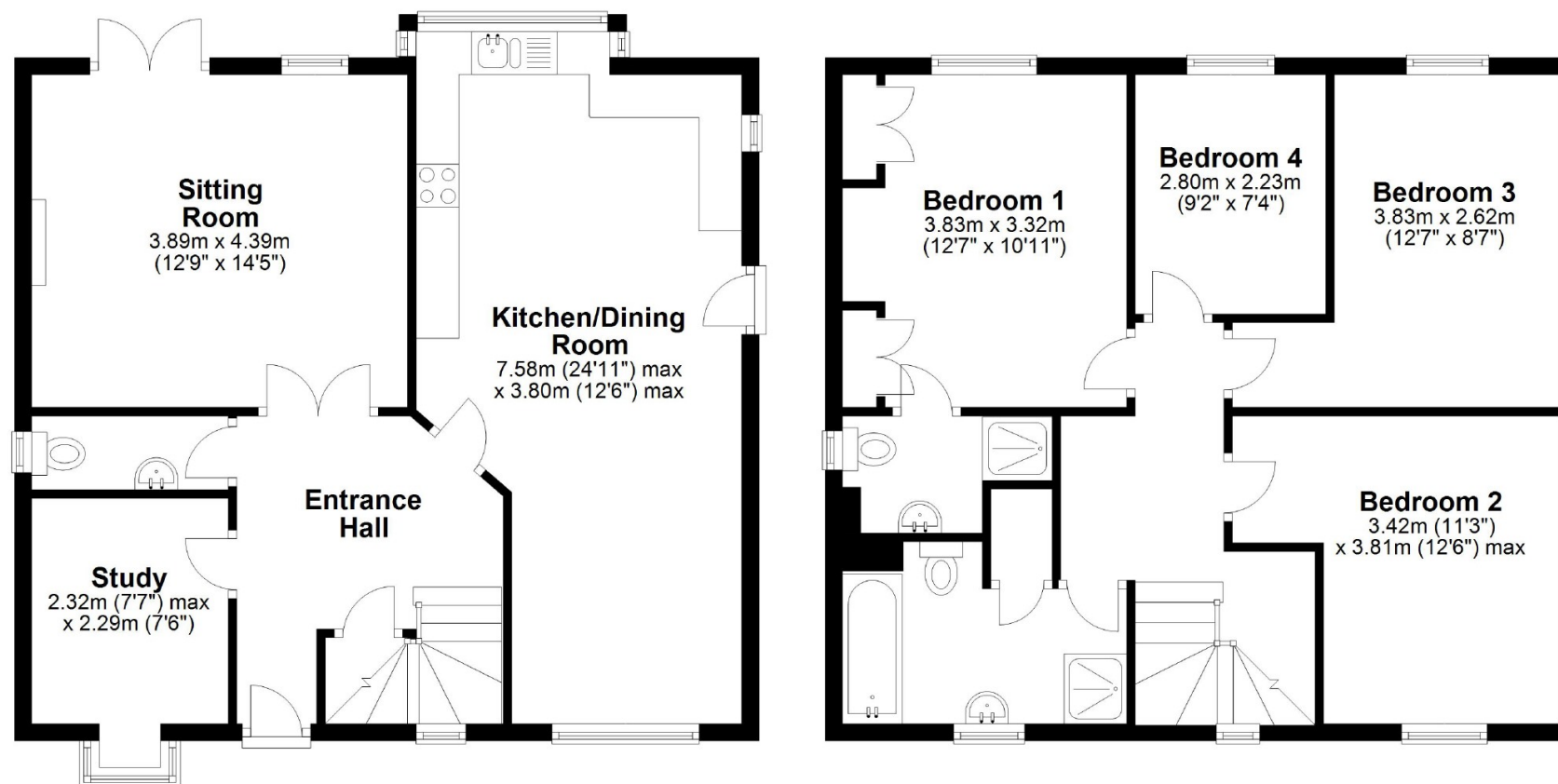


Illustration for identification purposes only, measurements are approximate, not to scale.
Plan produced using PlanUp.

33 / 34 Market Place, Chippenham, Wiltshire, SN15 3HP
Tel: 01249 652717
Fax: 01249 654100
Email: chippenham@strakers.co.uk

www.strakers.co.uk

■ Chippenham
■ Corsham

■ New Homes
■ Malmesbury

■ Swindon
■ Devizes

■ Auction
■ Lettings