

Nelson Road, Wimbledon, SW19

JUST REDUCED!!A very well presented two bedroom Victorian house nestled in the popular Battles area of Wimbledon within a quarter of a mile of South Wimbledon tube station and within one mile of Wimbledon town centre, mainline train station and the superb amenities the town has to offer. Accommodation includes two double bedrooms, modern fitted kitchen and bathroom, a superb reception room/diner and small secluded rear garden. An early internal inspection is highly recommended and this house would suit a first time buyer or commuter alike. (D2)

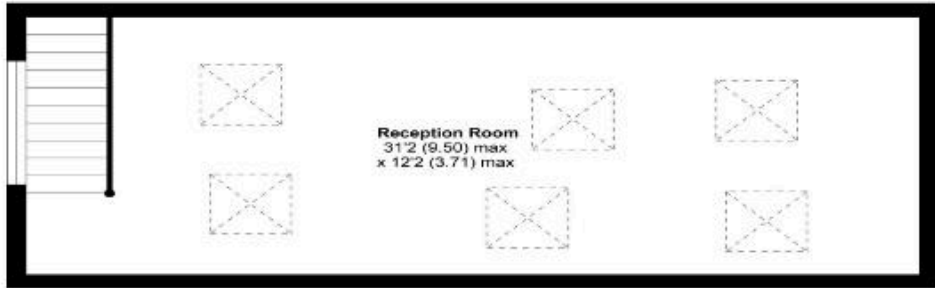
Guide Price £349,950 Freehold

06-68 Wimbledon Hill Road, Wimbledon, London SW19 7PA
tel: 020 8946 9468 fax: 020 8946 9465 email: sales.wimbledon@lauristons.com

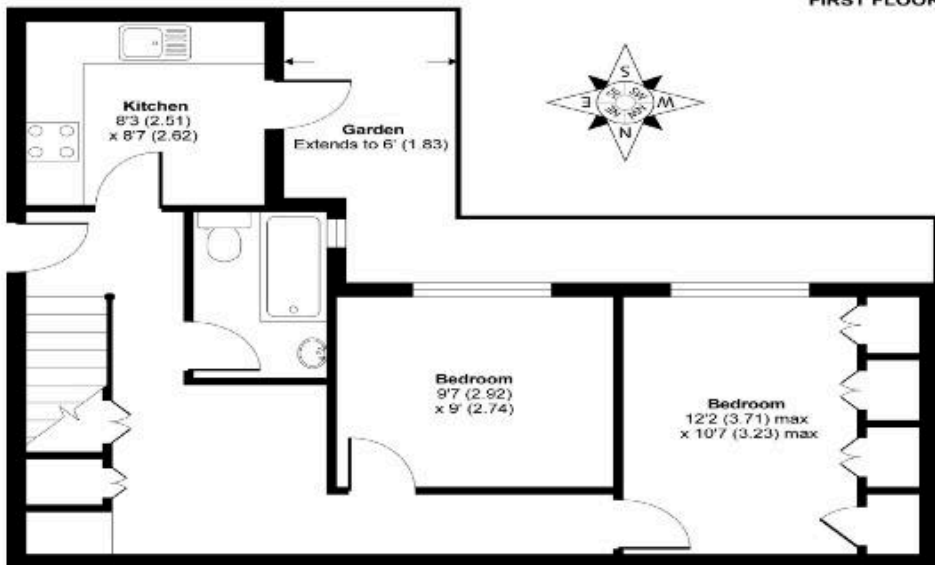


Nelson Road, Wimbledon, SW19

***JUST REDUCED!!!**A very well presented two bedroom Victorian house nestled in the popular Battles area of Wimbledon within a quarter of a mile of South Wimbledon tube station and within one mile of Wimbledon town centre, mainline train station and the superb amenities the town has to offer. Accommodation includes two double bedrooms, modern fitted kitchen and bathroom, a superb reception room/diner and small secluded rear garden. An early internal inspection is highly recommended and this house would suit a first time buyer or commuter alike. (D2)



FIRST FLOOR



GROUND FLOOR

Nelson Road Wimbledon SW19

APPROX. GROSS INTERNAL FLOOR AREA 875 SQFT / 81.2 SQM

If you have just started looking or have found your new home, you could benefit from talking to our Financial Services Department. For an informal discussion on anything from costs of moving to the most current mortgage rates please call us on 0208 946 9468.

Your home is at risk if you do not keep up repayments on a mortgage or any other loan secured on it. Written quotations available on request.

Viewing is strictly through the owners Lauristons.

66-68 Wimbledon Hill Road Wimbledon London SW19 7PA Telephone: 0208 946 9468

For clarification we wish to inform potential purchasers that we prepared these sales particulars as a general guide. We have not carried out a detailed survey, nor tested the services, appliances and specific fittings. Lease details, where applicable, must be confirmed by your solicitor. Carpets, curtains, gas fires, electrical goods / fittings or other fixtures, unless expressly mentioned, are not included in the sales of this property. If there are any important matters which are unlikely to affect your decision to buy please contact this office and we will be pleased to check the information for you before viewing the property. Before this property can be removed from the market, all offers must be checked by Lauristons Financial Adviser. This is a service we offer on behalf of our clients. Please note that our room sizes are quoted in meters to the nearest tenth of a meter on a wall to wall basis. The imperial equivalent is only intended as an approximate guide for those not fully conversant with the metric measurements. All measurements have been taken using a sonic tape measure and therefore may be subject to a small margin of error.