



Cowslip Close
Devizes, SN10 2TE



Cowslip Close, Devizes, SN10 2TE

Generously proportioned and delightfully presented detached house pleasantly situated on the outskirts of Devizes with countryside views to the rear

- Detached Family Home
- Countryside Views
- Three Bedrooms
- Bay Fronted Sitting Room
- Separate Dining Room
- Large Fitted Kitchen
- Impressive Conservatory
- Front and Rear Gardens
- Driveway & Garage

£350,000



Description

Well positioned detached family home pleasantly situated in a popular residential location on the edge of the town which enjoys wonderful views to the rear. The nicely maintained and spacious accommodation comprises three bedrooms with en-suite facilities to the master and a family bathroom on the first floor, while the ground floor offers two reception rooms, cloakroom, a large fitted kitchen and a superb garden room / conservatory. Externally there is ample off-road parking with a good size driveway leading to a single garage past an area of lawn with side access to a pretty rear garden with feature borders, patio area and a good sized area of lawn.

Situation

Pleasantly situated on this established residential area on the outskirts of Devizes. This thriving market town boasts a wealth of amenities including schools for all ages, a leisure centre, cinema, theatre, museum and bustling weekly market. The Kennet and Avon Canal is very close by and passes through Devizes also provides walking and fishing facilities and the major centres of Salisbury, Swindon, Bath, Chippenham and Marlborough are all within a 30 mile radius.

Property Information

Tenure: Freehold

Local Authority: Wiltshire Council

Council Tax Band: D

EPC Rating: D

All mains services connected

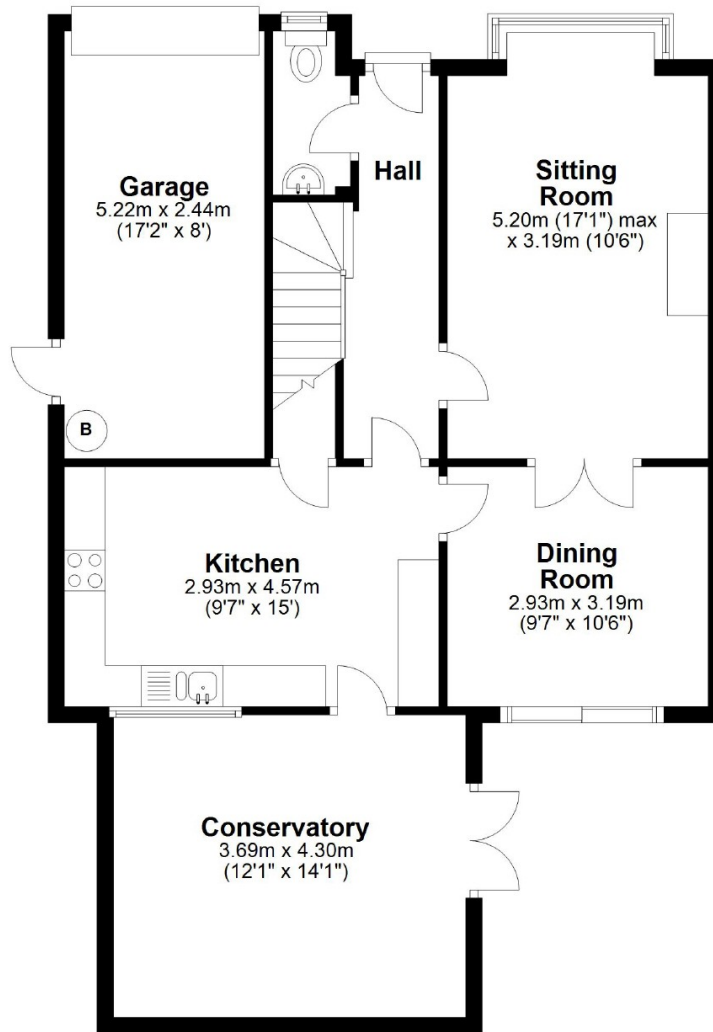


These particulars, whilst believed to be accurate are set out as a general outline only for guidance and do not constitute any part of an offer or contract. Intending purchasers should not rely on them as statements of representations of fact, but must satisfy themselves by inspection or otherwise as to their accuracy. No person in this firm's employment has the authority to make or give any representation or warranty in respect of the property. All measurements and distances are approximate only.



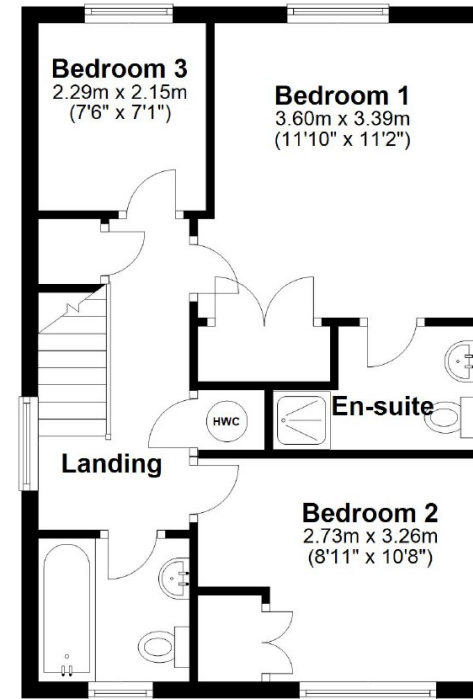
Ground Floor

Approx. 79.1 sq. metres (851.4 sq. feet)



First Floor

Approx. 43.1 sq. metres (464.2 sq. feet)



Total area: approx. 122.2 sq. metres (1315.6 sq. feet)

Floorplan may not be exactly to scale but is for illustrative purposes only
Plan produced using PlanUp.

6 / 7 Market Place, Devizes, Wiltshire, SN10 1HT
Tel: 01249 652717
Fax: 01249 654100
Email: chippenham@strakers.co.uk

www.strakers.co.uk

■ Chippenham
■ Corsham

■ New Homes
■ Malmesbury

■ Swindon
■ Devizes

■ Auction
■ Lettings