

DOMUS NOVA

nottinghill@domusnova.com | 020 7727 1717

[Property](#) / [Map](#) / [Floor plan](#) / [Contact](#)



LINDEN AVENUE, NW10
£2,150,000

DOMUS NOVA

[Property](#) / [Map](#) / [Floor plan](#) / [Contact](#)

Linden Avenue, NW10

£2,150,000

A sensational space, exquisitely designed and exceptionally executed, this jaw dropping three-bedroom home offers a superb lateral footprint throughout. Having been completely remodelled, re-planned and rebuilt, to exacting standards, this wonderful home is truly unique and inviting. Opening from the entrance hall is a beautiful, dramatic and seriously welcoming double reception space accommodating the kitchen, dining and seating areas. The wonderful kitchen space opens directly onto an indulgent west facing walled garden, blending the inside/outside areas perfectly.

- Open-plan reception room
- Contemporary kitchen/breakfast room
- Master bedroom with en-suite and roof terrace
- Two guest bedrooms
- Guest bathroom
- Guest cloakroom
- Walled garden
- Borough of Brent
- Approx. 1,780 sq ft / 165.4 sq m. EPC=E

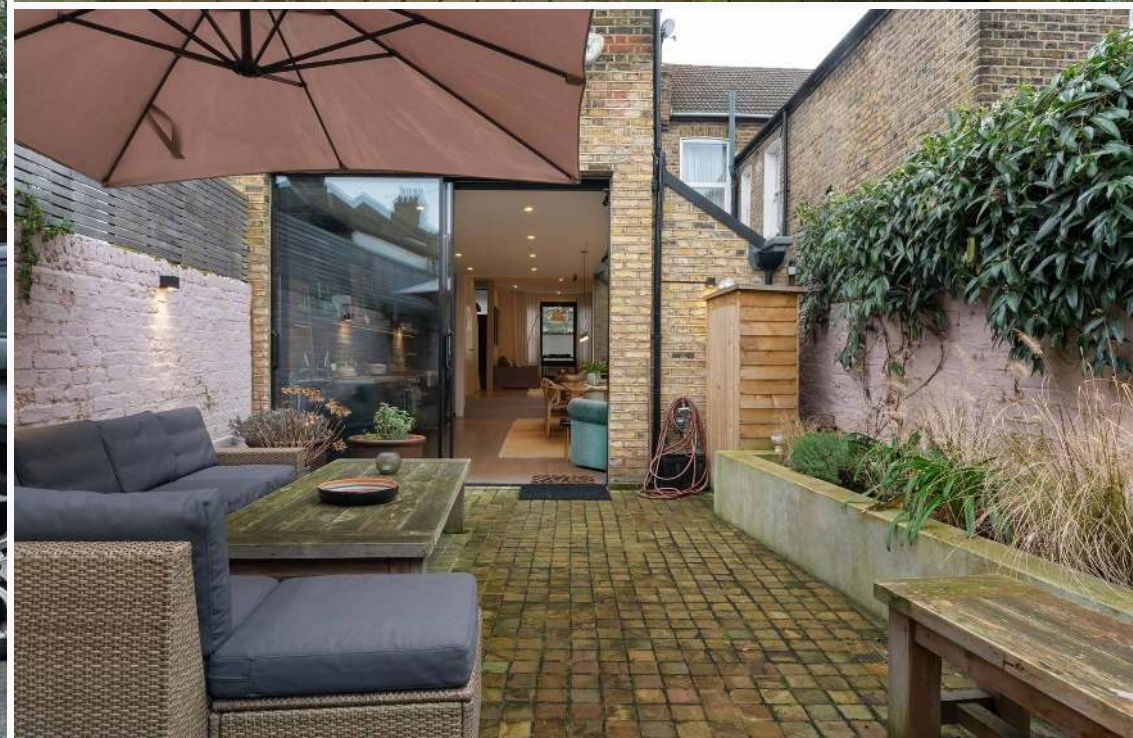


[VIEW PROPERTY ON DOMUSNOVA.COM](#)



DOMUS NOVA

[Property](#) / [Map](#) / [Floor plan](#) / [Contact](#)






DOMUS NOVA

Map

 Linden Avenue, NW10

Local Information

Architecture

-  1 Henning Stummel Architects
-  2 23 Architecture
-  3 Guy Stansfeld Architects

Art & Culture

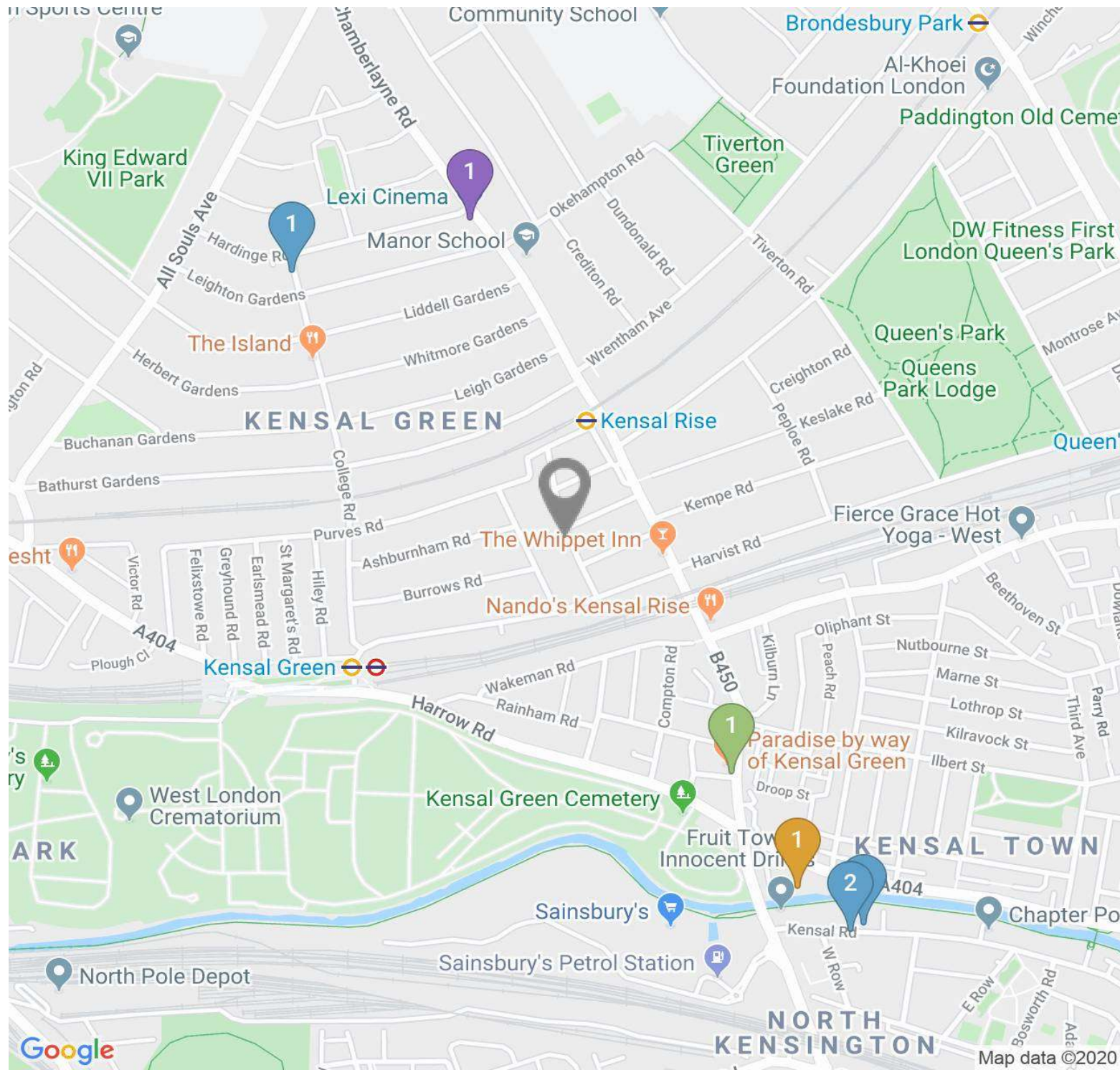
-  1 Lexi Cinema

Design

-  1 Tom Dixon Studio

Food & Drink

-  1 Paradise by Way of Kensal Green



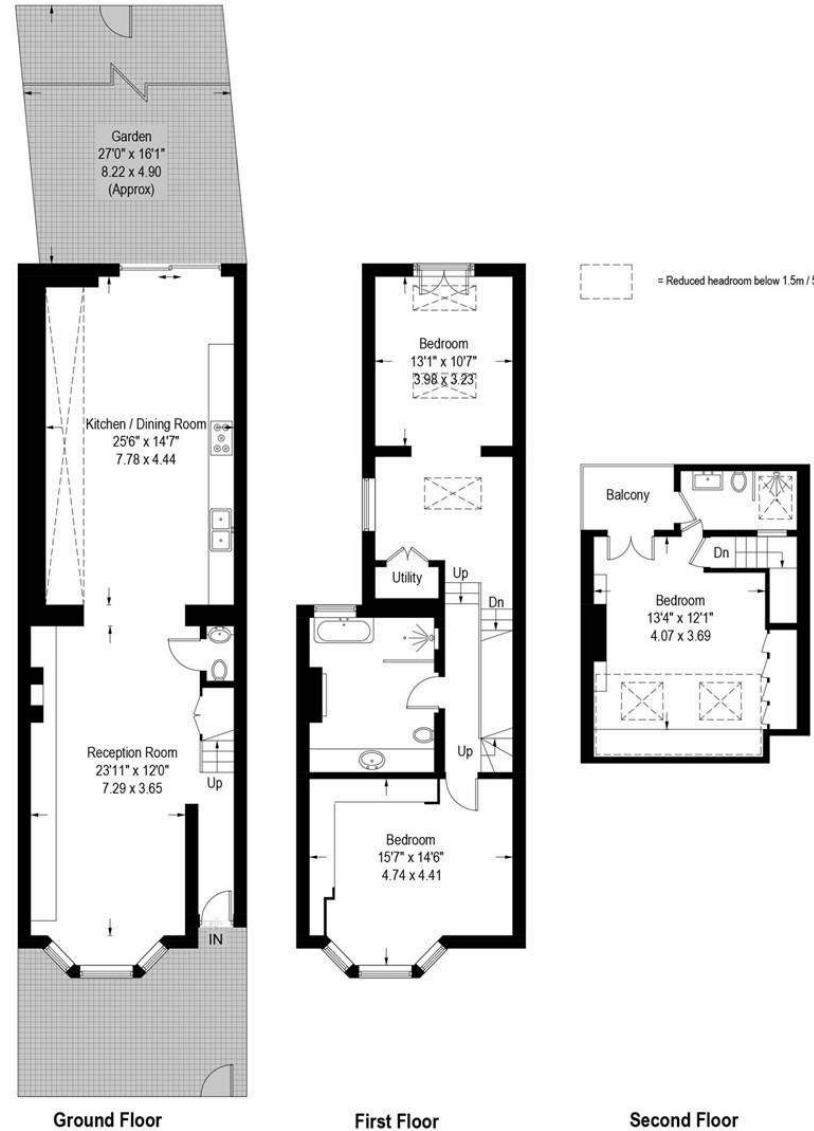
DOMUS NOVA

Floor plan

This image is illustrative only

(Not to scale)

Approximate Gross Internal Area
1780 sq ft / 165.4 sq m



Ground Floor

First Floor

Second Floor

Contact

1 Domus Nova Notting Hill

17 Kensington Park Road, London W11 2EU

020 7727 1717

nottinghill@domusnova.com

2 Domus Nova Bayswater

78 Westbourne Grove, London W2 5RT

020 7221 7817

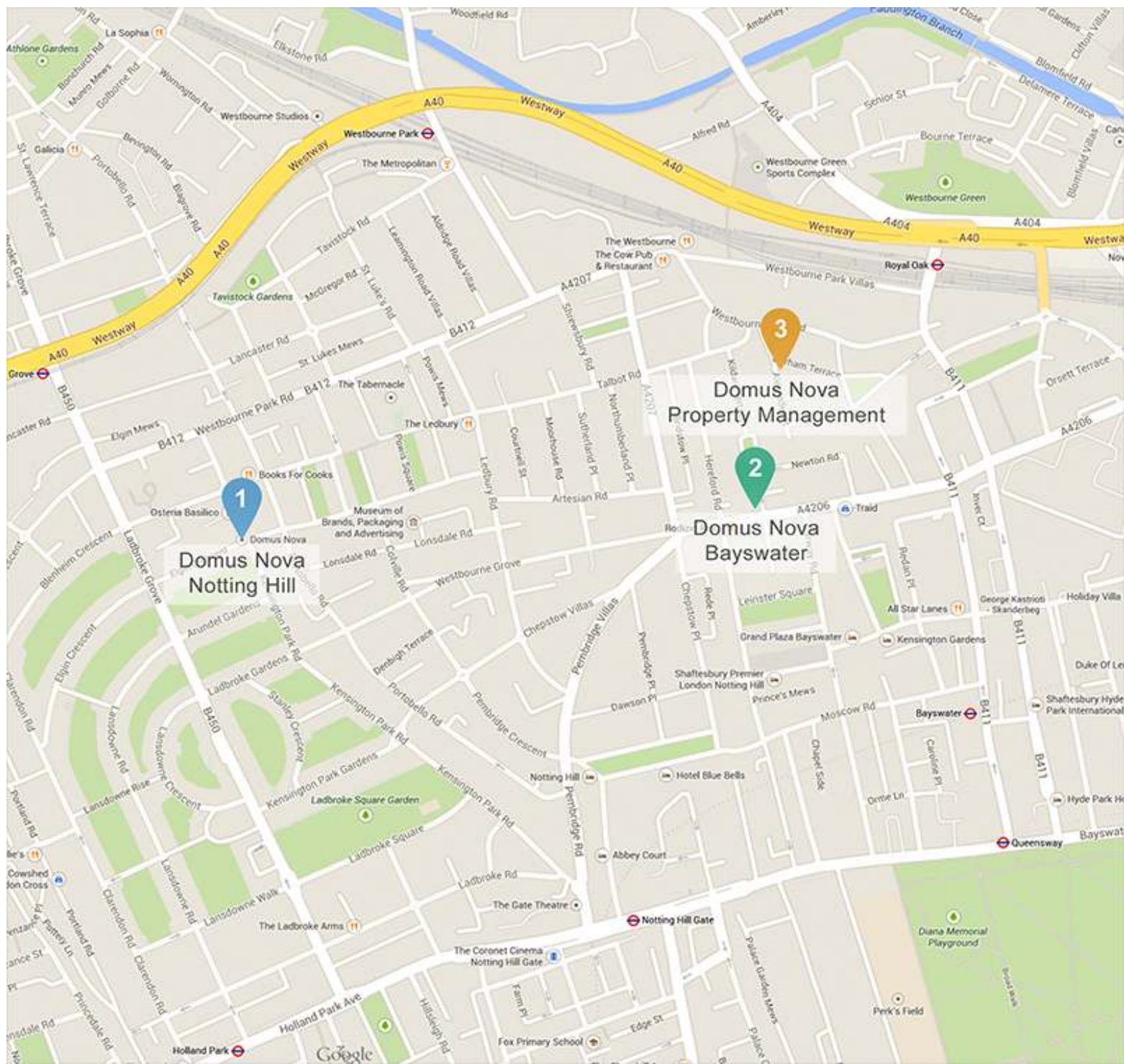
bayswater@domusnova.com

3 Domus Nova Property Management

37 Alexander Street, London W2 5NU

020 7908 9338

management@domusnova.com



A blurred photograph of a modern living room. The room features a white sofa, a fireplace, and a bookshelf. The text "DOMUSNOVA.COM" is overlaid in the center.

DOMUSNOVA.COM